

Agenda Item No:

Report To: Overview and Scrutiny Committee

Date: 24 February 2015

Report Title: Ashford Community Safety Partnership: an update on the Community Safety Partnership activity in the Borough

Report Author: James Hann, Health, Parking and Community Safety Manager



Summary: The Community Safety Partnership works to make the Borough a better place to live and work and to reduce crime and disorder. Members are presented with statistical information relating to the current Strategic Assessment and the work that has been carried out by partners in the past 11 months.

Members are welcome to ask questions about any aspect of the Community Safety Partnership.

Key Decision: No

Affected Wards: The Ashford Community Safety Partnership covers the whole borough.

Recommendations: The Overview & Scrutiny Committee is asked to note the information contained within this report.

Policy Overview: The Overview & Scrutiny Committee is designated as the committee responsible for Crime & Disorder under the Police Justice Act 2006.

Financial Implications: The Community Safety Partnership is provided with a grant by the Police and Crime Commissioner.

Risk Assessment Not applicable.

Background Papers: Community Safety Partnership strategic assessment and tactical delivery plan for 2014/15 (both attached)

Contacts: james.hann@ashford.gov.uk Tel: (01233) 330513

Agenda Item No.

Report Title: Ashford Community Safety Partnership: an update on the Community Safety Partnership activity in the Borough

Purpose of the Report

1. The Overview & Scrutiny Committee is designated as the committee responsible for crime and disorder under the Police Justice Act 2006. Annually the Committee reviews various aspects of the Community Safety Partnership (CSP).
2. Community safety partnerships are statutory crime and disorder reduction partnerships, enabling responsible authorities to develop and deliver local strategies to reduce crime and disorder. The responsible authorities work with 'cooperating bodies' to achieve their objectives.
3. In April 2014, the responsible authorities for the Borough of Ashford were Kent Police, Ashford Borough Council (ABC), Kent Fire and Rescue Service (KFRS), Kent Probation, Kent County Council (KCC) and the Ashford Clinical Commissioning Group who work together to tackle crime and anti-social behaviour that affects our communities. These agencies have a statutory duty to come together and work with other groups, organisations and agencies to prevent crime and disorder. Other partners include KCA, Moat Housing, Pipeline, Turning Point, Immigration & Border Control, NHS and Kent Integrated Adolescent Support Services.
4. The CSP has a responsibility to convene a strategy group of all responsible authorities in the CSP (although it can invite other organisations), prepare a strategic assessment of local crime and community safety priorities using information provided by partner agencies and the community, and produce an action plan to meet those priorities.
5. The Crime and Disorder Regulations 2007 requires responsible authorities to show that their CSP offers value for money.
6. Overview and scrutiny enables councils to hold responsible authorities to account for local action and local public spending. Sections 19-21 of the Police and Justice Act 2006 introduced community safety scrutiny.
7. The role of the Overview and Scrutiny Committee is to review, scrutinise and make reports or recommendations to the responsible authorities of the CSP.

Background

8. Ashford's Community Safety Partnership completes an annual strategic assessment which refreshes the priorities and planned activities to provide the knowledge and understanding of community safety problems to the members of the CSP (Appendix A).
9. The 2014/15 priorities were:
 - Anti-social behaviour and environmental crime
 - Domestic abuse

- Substance misuse
 - Acquisitive crime
 - Violent crime
 - Road safety
 - Rural crime
10. Each priority has a lead agency tasked with developing and delivering the tactical delivery plans and providing updates on a quarterly basis to the CSP.
 11. During 2014/15 an ambitious programme of community safety work has been undertaken collaborative by the CSP member. While not all tactical delivery plan actions have been completed, as of the date of this report, the majority have been undertaken and most of the remaining actions are scheduled to take place in the coming weeks before the end of the financial year. The CSP has also responded to emerging issues throughout the year and as a consequence additional work has been undertaken which does show in the tactical delivery plan.
 12. The Community Safety Unit is the operational element of the Community Safety Partnership, which comprises many organisations including: Ashford Borough Council, Kent Police, Kent Fire and Rescue Services and Kent County Council, with the one common aim - to make the borough a better place to live, work and follow leisure pursuits whilst promoting the local economy.
 13. In April 2013 Kent Fire and Rescue, Kent Police and KCC officers (with the support of Chief Executives/Officers and Members) felt there was merit in the concept of closer collaboration and joint working on county-wide Community Safety matters. A Steering Group was formed to explore this concept further and this report has been prepared to develop this proposal. The work has been sponsored by the Kent Community Safety Partnership.
 14. In the past both county and district partners have been able to access funding streams available as part of Government initiatives. This funding enabled countywide partners to provide services in support of their district colleagues. With the removal of these funding streams, and changes to support funding, all three partners are facing significant financial pressures now and in years to come. Further details on the two phased proposals that will see a joint Community Safety Team are contained in Appendix B.

Review of performance

Anti-Social Behaviour including Environmental Crime (Lead Agency – Ashford Borough Council)

15. The information provided in this section is provided by the Kent Police Partnership Pack but unfortunately doesn't break down the type of anti-social behaviour (ASB) incidents reported.

	2011/12	2012/13	2013/14	No diff	% diff	Per 1,000 pop	County Rank 2012/13	County Rank 2013/14
Ashford	3,823	3,191	1,850	1,341	-42%	15.40	6	1
Kent	50,477	44,210	40,540	3,670	-8.3%	27.39	-	-

16. The data provided above shows the number of incidents of ASB reported to Kent Police for the borough of Ashford has decreased by a massive 1,341 incidents compared to the previous full year statistics. It is anticipated that this trend has continued during this year.
17. Members will recall that reported ASB decreased in 2012/13, but in 2013/14 the reduction was by as much as 42%. Ashford now has the lowest volume and rate (per 1,000 population) in the county with 1,850 incidents and a rate of 15.40 incidents per 1,000 people.
18. The daily ASB patrol (Operation Claxon) calls on victims of ASB and targets known offenders, linking with Kent Police's Joint Family Management Programme. This in turn has excellent links with the Ashford Supporting Families programme and works to both target known offenders, but also to work the individuals and families to try and reduce the problems at source.
19. Kent Police's ASB officer works with high risk victims of ASB and provides excellent advice and support to housing officers and youth workers working with our communities.
20. A number of partners have contributed to Cleansweep events in both the urban and rural areas, (Wye, Hothfield, Kennington, Singleton and Brookfield Road); calling on resident to support vulnerable individuals, cleaning up areas where possible and learning first hand from our communities the about the problems they are experiencing. Enforcement action was undertaken by individual agencies (for example the serving of warrants and making arrests) and in partnership with partners (for example stopping vehicles with Her Majesty's Revenue and Customs to test for red diesel).
21. Kent Fire and Rescue Service coordinated a multi-agency visible presence on Halloween and Bonfire night, resulting in a reduction in ASB on these usually peak nights for ASB.
22. While it is impressive to have the lowest ASB figures in Kent, there were still 1850 reported incidents and each incident has an impact on our communities. Our partners will continue to work together to try and reduce this further.

Fly Tipping

23. Fly Tipping incident figures reported by Local Authorities through Flycapture show an increase when comparing 2012/13 and 2013/14 data. Ashford has seen an increase of 178 incidents with Kent overall seeing an increase of 2,999 incidents reported.

24. Below is a table displaying the annual summary of fly tipping incidents as reported by local authorities through Flycapture for both Ashford and Kent.

	2008/09	2009/10	2010/11	2011/12	2012/13	2013/14
Ashford	1,123	1,049	876	874	946	1,124
Kent	12,963	11,970	11,208	11,611	12,135	15,134

25. The areas around Chilmington are still experiencing high levels of flytipping. Areas include Bartletts Lane, Chilmington Green Lane and Mock Lane plus additional fly-tipping on the KCC land adjacent to the old landfill site.
26. The rural areas which have seen regular fly tipping include Bethersden, Bilsington, Charing, can be Orlestone and Westwell Lane.
27. There have also been regular incidents of bulk items dumped outside the flats at Bybrook Road and Hillbrow Road. Beecholme Drive has also experienced a number of incidents.
28. While there has been some work undertaken to communicate with the community about what action when flytipping occurs, this has been limited by staffing changes and the new waste contract within Ashford Borough Council. The appointment of a new Environmental Contracts and Operations Manager will, it is hoped, see a programme of awareness and enforcement in 2015/16. This will be reflected in the tactical delivery plan.

Criminal Damage

29. Criminal damage refers to crimes where a person intentionally or recklessly destroys or causes damage to another person's property. Criminal damage, often referred to as vandalism, includes graffiti, arson and other forms of damage to property, including vehicles.
30. Ashford is currently ranked 4 out of the 12 districts with 1 being the lowest. There has been a reduction of 133 crimes recorded in 2013/14 when compared with 2012/13. Ashford Victoria ward has suffered the greatest volume of criminal damage incidents reported.
31. Work undertaken by the CSP to reduce ASB included:
- Early identification & assessment of perpetrators to ensure appropriate actions are taken; including referral to multi-agency groups which manage perpetrators, use of appropriate sanctions including the new provisions under the Anti-social Behaviour, Crime and Policing Act 2014.
 - Provision of Joint Family Management Programme to provide intensive support to parents, where anti-social behaviour and youth crimes are evident. Working closely with KCC Children's Services and other partners to coordinate work around Ashford Supporting Families.
 - KCC Wardens have engaged with the local community at the earliest opportunity to assess & review impact of ASB upon a community.
 - Attending all repeat victims ASB calls.
 - Multi-agency operations have targeted ASB hotspots, including those in the night time economy.

- Delivered two Youth Engagement Around Road Safety (YEARS) programmes in conjunction with Homewood School to over 200 six formers.
 - Ensured victims of ASB receive appropriate support, including early identification of vulnerable and repeat victims via continuation of Operation Claxon and a community trigger approach on a one monthly basis of any high risk area in the Borough.
 - Action around noise - actively shared and monitored information with partner agencies.
 - Pathway course planning for March 2015.
 - Engaged with the community at Community Forums and other meetings.
 - Developed links with Mental Health.
 - Established a Community Trigger process.
32. The Ashford Supporting Families programme is being led by Ashford Borough Council. This national programme has seen over 130 families in Ashford “turned around” over the last two years.
33. The criteria for success are reducing the number of school absences, reducing crime and ASB and reducing worklessness.
34. A separate report was made to the Cabinet in September 2014 (minute 118/09/2014) about the results of this initiative, but the reduction ASB by families involved in the programme is undoubtedly having an impact on the recorded ASB levels in the Borough.
35. Appendix C provides details about how the partners have progressed with each task.

Domestic Abuse (Lead Agency – Ashford Domestic Abuse Forum)

36. The following information has been supplied by Kent Police and relates to the period October 2013 to September 2014.

No of incidents:							
	2011/12	2012/13	2013/14	No diff	% diff	Per 1,000 pop aged 16+	County Rank
Ashford	1,399	1,506	1,672	+166	11%	17.56	6
Kent	18,926	19,459	21,724	+2,265	11.6%	18.19	-

No of repeat victims (includes 16-17 year olds):							
Ashford	341	360	413	+53	14.7%	4.34	6
Kent	4,587	4,704	5,481	+777	16.5%	4.59	-

37. Incidents of domestic abuse continue to increase in Ashford.
38. Information provided by Kent and Medway Domestic Abuse Strategy Group shows that Ashford has seen an increase of 77 visitors over the previous year accessing the One Stop Shop services which is an increase of 32% on the previous year and an increase of 241 visitors since 2010/11.

39. As in the previous year Ashford had the highest number of visitors to a single One Stop Shop. The busiest month this year for Ashford was November with 38 visitors and the quietest was August with 11 visitors.
40. The breakdown of ethnic grouping that attended the Ashford One Stop Shop are 78% white British, 7% not recorded and 15% variety of ethnic backgrounds (White European being the largest single group at 7%).
41. In common with last year, the majority of visitors to the One Stop Shops are between the ages of 26-29 years old (44% compared with 43% last year) and this pattern is similar across Kent. Last year only one visitor from all the One Stop Shops was under 18, this year 19 visitors were under 18 (1% of the total visitors).
42. Information provided by Multi-Agency Public Protection Arrangements (MAPPA) and the Multi-Agency Risk Assessment Conferences (MARAC) Coordinator for the period October-September advises that in 2013/14 97 cases were presented to MARAC – 17 of which were repeat cases which equates to 18% of the total number.
43. In September 2014 Ashford Borough Council committed to spend up to £50,000 per year for the next three years on domestic abuse work (minute 118/09/2014 refers). A Domestic Abuse Coordinator has been appointed and their initial focus is to support the One Stop Shop and coordinating the Freedom programme to help women who have experience domestic violence to make sense of and understand what has happened to them and build a future for themselves.
44. The Council has also agreed to contribute to the Kent Domestic Abuse Consortium (KDAC) to provide an Independent Domestic Abuse Advisor to provide practical and emotional support to the high risk victim of domestic abuse in the Borough.
45. Work undertaken by the CSP to reduce Domestic Abuse included:
 - Enable five schools to have a domestic abuse input, such as "Love Shouldn't Hurt" to year 9 & 10 students.
 - ABC has provided housing and benefit advice at the One Stop Shop.
 - DASH and IDVA training for Neighbourhood Police Officers on domestic abuse has been delivered in response to feedback from victims.
 - Awareness session for partners (KCC Wardens, KFRS Officers, Housing Officers, etc.) was delivered and further training is planned in the coming months.
 - Secured funding to support an independent domestic violence advisor.
 - Improved awareness of One Stop Shop & domestic abuse website.
 - Partners continue to provide support and involvement in Ashford's Domestic Abuse Forum.
46. Appendix C has details of how the partners have progressed with each task.

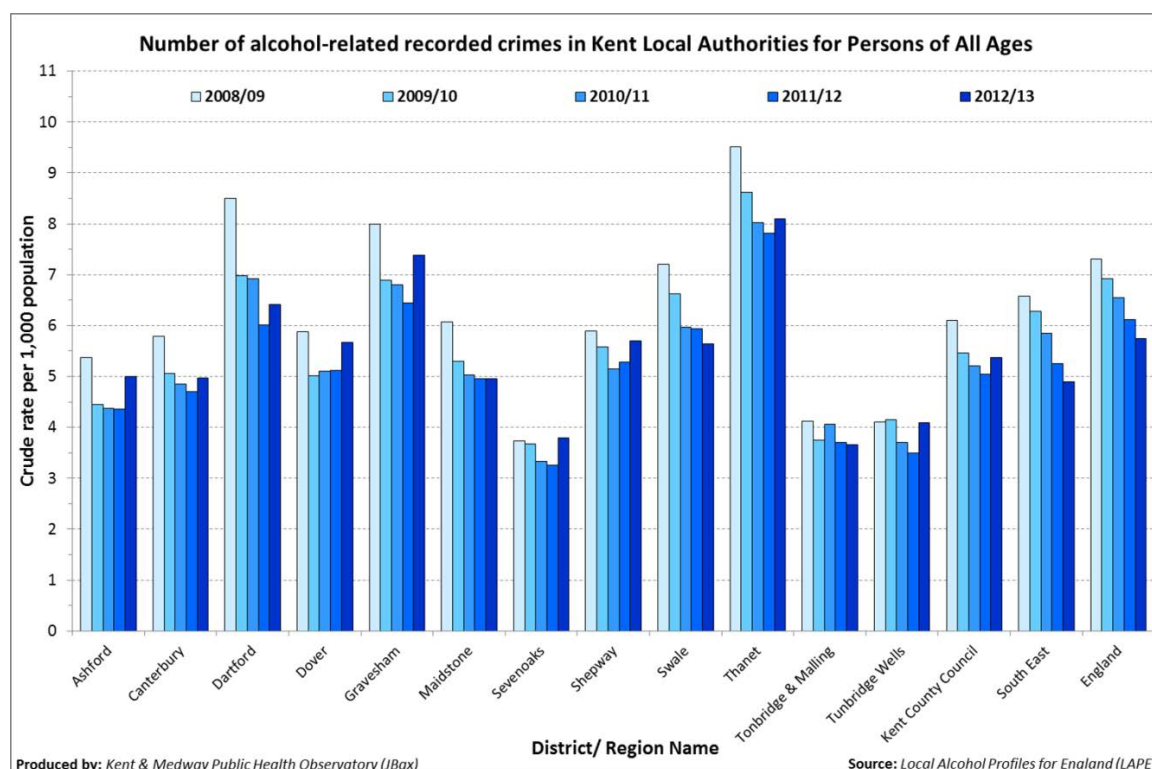
Substance Misuse (Lead Agency – KCC Public Health)

Drugs

47. Based on information provided by Kent Police for period October 2013 to September 2015 Ashford can report that drug offences have decreased from 240 to 214 which is a decrease of 26 offences (10.8%).
48. 2013/14 has also seen the new psychoactive substances/lethal highs gain popularity with a number of 'Headshops' appearing in the county and one opening in Bank Street, Ashford. There has been great concern regarding these substances with 68 deaths linked to them in 2012.

Alcohol

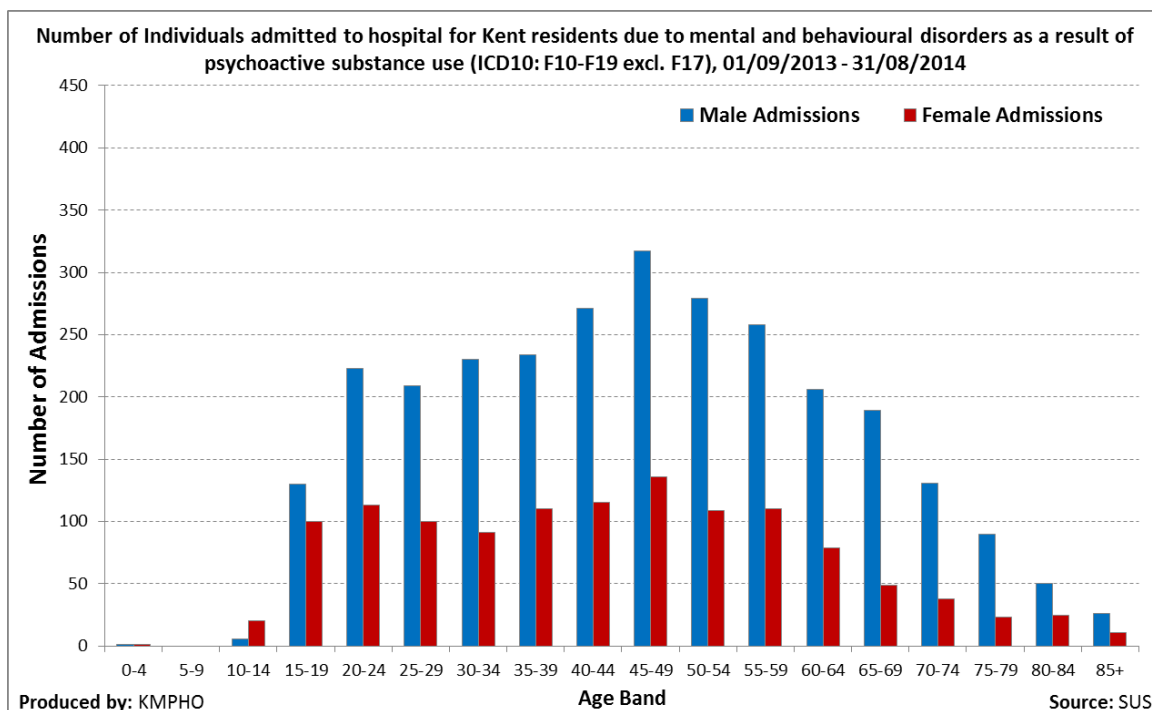
49. Information provided by KCC, Public Health for the period September 2013 to August 2014 shows that Ashford has seen a reduction of hospital admissions where alcohol is evident from 67 admissions in 2012/13 to 50 admissions in 2013/14. This is a reduction of 17 admissions and 25.4% difference on last year.
50. Recorded crime attributed to alcohol (all ages): Information supplied by the Public Health (Local Alcohol Profiles for England) for the period of September to August illustrates that Ashford has seen a slight increase of crime attributed to alcohol and in 2012/13 591 crimes were recorded.



Psychoactive Substance Use

51. Ashford was the only one of the 12 districts to see a reduction on admissions to hospital from 213 in 2012/13 to 204 in 2013/14 for mental and behavioural disorders related to psychoactive substance use. The information presented shows that Ashford has the second lowest number of residents admitted. The

age group with the highest recording for both male and female is 45 – 49 which is a change to last years 40 - 44 age band.



52. Work undertaken by the CSP to reduce Substance Misuse included:

- Specialist staff (e.g. KCA & Turning Point) have become Involved in the Integrated Offender Management programme and in the Ashford Supporting Families initiative.
- Run drug enforcement operations, including licensing controls and other enforcement measures have been conducted to ensure licensed premises do not encourage binge drinking, or sell to those underage or allow drug dealing.
- All new Designated Premises Supervisors have received a joint Kent Police/ABC licensing visit, incorporating drug swab analysis when appropriate.
- Drug paraphernalia information found is shared with partner agencies at the monthly community safety meeting.

53. Appendix C has details about how partners have progressed with each task.

Acquisitive Crime (Lead Agency – Kent Police)

54. Acquisitive crime is broken down into a number of groupings which are: fraud, metal theft, robbery, shoplifting, theft and handling stolen goods, theft from motor vehicle, theft of motor vehicle, theft of pedal cycle, and theft offences.

55. The following information is provided by Kent Police except for fraud which is provided by British Transport Police. All data is for the period October 2013 to September 2014 except for Theft Offences which runs from April 2013 to March 2014.

Crime Type	2011/12	2012/13	2013/14	No diff	Wards with highest volume per 1,000 pop.
Fraud	7	0	0	0	N/A
Metal Theft	147	137	75	-62	
Robbery	51	49	43	-6	
Shoplifting	760	692	777	+85	Norman & Victoria
Theft & Handling Stolen Goods	2139	1889	2130	+241	Norman & Victoria
Theft from Motor Vehicle	490	455	401	-54	
Theft of Motor Vehicle	118	108	128	+20	Weald North
Theft of Pedal Cycle	192	110	222	+112	Victoria & Norman
Theft Offences	1187	1087	1131	+44	Victoria
Burglary Dwelling	378	389	358	-31	
Burglary Other	550	475	604	+129	Great Chart with Singleton North

56. The areas most affected by shoplifting include the centre of Ashford, McArthur Glen and Orbital Park in Ashford and Tesco in Tenterden.
57. Kent Police have seen a pattern whereby hardened criminals have moved from burglary into shoplifting, possibly partly due to the differences in sentencing when taken to court.
58. The theft of pedal cycles has seen a particular increase in the past year and Kent Police have taken a number of steps to counter this increase.
59. Work undertaken by the CSP to reduce Acquisitive Crime included:
- Multi-agency Cleansweeps in areas to raise awareness & reduce acquisitive crimes in areas.
 - Smart water & pedal cycle marking campaigns have been run, focussing on bicycles, skateboards & target crime hotspots.
 - An initiative was delivered in November 2014 which included training on radio use, how to deter shoplifter and recognising counterfeit bank notes - well attended and evaluation of effectiveness of training to be undertaken. General feedback of the event was positive, although improvements can be made.
 - Improved joined up working and sharing intelligence with various programmes i.e. Joint Family Management Programme (JFMP) and Ashford Supporting Families.
 - Developed presentation packages for delivery to Parishes and forums advising of Community Safety activity.
 - Produced information leaflet advising of various products and services that could assist with home security and safety
60. Appendix C has details about how partners have progressed with each task.

Violent Crime (Lead Agency – Kent Police)

61. Violent Crime is broken down in to several categories, which are as follows: Assaults, Sexual Offences, Violence Against the Person, and Violent Crime
62. The following is provided by Kent Police and NHS (Kent and Medway Public Health Observatory) and Kent County Council.

Crime Type	2011/12	2012/13	2013/2014	No diff	Wards with highest volume per 1,000 pop.
Assaults		20	23	+3	
Sexual Offences	106	113	154	+41	Charing, Victoria & Stanhope
Violence Against the Person	1097	1327	1661	+334	Victoria
Violent Crime	1254	1489	1858	+369	Victoria

63. Also provided in the KCC information provided by Public Health are details on deliberate self-harm which showed an increase of admissions in Ashford from 167 to 185. The groups most likely to be admitted to hospital for self-harming are males aged 30-34 years and females aged 20-24 years.
64. Work undertaken by the CSP to reduce Violent Crime includes:
- Operation Sentry (a multi-agency operation) was carried out in August 2014.
 - Operation Amazon (a police night time economy initiative) was carried out on Friday and Saturday evenings.
 - A multi-agency operation was accrued out during the opening weekend of Cameo nightclub.
 - A multi-agency operation Cureen was accrued out during the football World Cup, which saw the reports of domestic abuse not rise in the borough, which was unique across Kent.
 - Ashford Borough Council's Licensing Policy was reviewed, consulted on and agreed by the Council in 2014.
 - A close working relationship was established with Homewood school and regular engagement with students on safety topics were carried out. This included the delivery of three internet safety events to year 11 sixth formers and four presentations of Life after Homewood are scheduled for March 2015.
 - Youth on Youth presentations have been arranged at North and Towers Schools.
65. Appendix C has details of how partners have progressed with each task.

Road Safety (Lead Agency – Kent Fire & Rescue Service)

66. Information provided by KCC Transport Intelligence reports for the period of July 2013 to June 2014 that Ashford has seen a slight increase from 524 Road Traffic Collisions (RTC's) to 535 when compared to the same period the previous year with an increase of 11 reports. Of these figures 59 were related to casualties under the age of 16 which was an increase of 24 when compared to figures the previous year.

67. It is also reported that Killed and Seriously Injured (KSI's) has increased to 78 over the same period which is the highest overall in the county. The KSI's for the under16 age group in Ashford is also the highest in the county at nine.
68. KFRS reported that the most common locations they attended in the Ashford area for RTC's was the M20, A28, Charing Hill, A20, A2070 and Chart Road.
69. Members are able to find out more about road risk in the Borough and individual neighbourhoods by accessing CrashMap at <http://www.crashmap.co.uk>. This enables searches by area, allows filtering by the year in which accidents took place and provides precise data on which the incident occurred.
70. Work undertaken by the CSP to reduce Road Safety includes:
 - Three Biker Down training events have been run in Ashford, targeting motorcyclists of all ages and included Ashford Supporting Families young people.
 - Delivered road safety advice to over 1000 year 6 children as part of the Safety In Action project.
 - Restorative Justice event carried out by Police Community Support Officers (PCSOs) targeting drivers in Crundale, Charing, Godmersham, Park Farm and Hothfield.
 - Women in Gear (car and road awareness) event held in November at Kia car showroom, Ashford Orbital. 100-120 males and females attended, KCC Community Wardens had a joint stand with KCC Road Safety. Feedback was very positive.
 - School parking campaign run in top three schools with parking issues.
 - Mass messaging techniques used by KCC Highways to raise awareness amongst target groups of key road safety issues.
 - Young Driver education was provided to 16-18 year old students in two schools.
 - New initiative, which focuses on the negative impact of driving under the influence of drugs held in one school, with two other schools booked as tentative.
 - Practical skills were taught to help avoid being involved in a crash and advise on what to do if first on the scene of a crash where someone is injured
71. Appendix C has details of how partners have progressed with each task.

Rural Crime (Lead Agency – Kent Fire & Rescue Service)

72. The statistics for Rural Crime are already covered under the Acquisitive Crime section and are not currently reported on separately.
73. The actions taken primarily by Kent Police, but in partnership with KCC Wardens, the National Union of Farmers and local communities has seen an 8% reduction in rural crimes last year compared to the previous year.
74. Work undertaken by the CSP to reduce Rural Crime included:

- Meeting held in December for an East Kent Rural Action/Intel with partners. National Farmers' Union taking the lead with KCC Community Warden providing support.
- Operation Nonagon (working with farmers/landowners to target rural criminality) up and running, sometimes in partnership with other districts (e.g. Shepway and Swale)
- Operation Lupin has been run during this period which concentrated on break in other than dwellings, contributing to a significant reduction in break-ins in the rural areas. Operation saw increased rural visibility and crime prevention activities.
- Operation Parody has been run in the Marsh area regarding hare coursing.
- Recent local operations aimed targeting the rural area/rural offenders have shown positive results in reducing rural crime in excess of 55%.
- Follow up meeting held in January 2015 to update on local initiatives.

75. Appendix C has details of how partners have progressed with each task.

Financial Performance

76. The Police and Crime Commissioner provided a grant of £29,905.18 in two instalments for CSP work that aligns with the Kent Police and Crime Plan.

77. Grants are allocated for initiatives and projects aligned with the CSP priorities and details of the allocations made or pending in 2014/15 are summarised in Appendix D.

2015/16 Strategic Assessment

78. On Thursday 22nd January 2015 a working group of the CSP came together to consider the performance of the past year and to recommend to the CSP the following priorities for adoption at the March CSP meeting:

- Domestic abuse
- Substance abuse
- Anti-social behaviour and environmental crime
- Acquisitive crime
- Road safety
- Violent crime

79. Rural Crime initiatives are to be incorporated within the acquisitive crime priority and other area, which will make this easier to manage, review and evaluate.

80. In addition to the current priorities there are a number of other issues that have become more of a focus to partners or the public over the last year. These include:

- Mental Health
- Preventing violent extremism
- Child sexual exploitation/safeguarding
- E-safety
- Legal Highs (also known as New Psychoactive Substances)

81. To ensure partnership focus is given to these emerging issues, the above will be included in the 2015/16 Community Safety Partnership Strategic Assessment tactical delivery plans.
82. In February a series of workshops will be held with partners to develop the tactical delivery plans for 2015/16. Feedback from this meeting will help to develop these plans.

Community Safety Partners' Feedback

83. Members of the CSP were asked to share their thoughts on the CSP with a view to capturing not only what we do well but where improvements can be made.
84. The first question was "what is your proudest community safety achievement that you have contributed to in 2014/15?" Answers included:
 - Reducing rural crime
 - Combined Halloween and Bonfire patrols to tackle ASB
 - Well organised collaboration between partners including schools, KFRS, ABC (Health, Parking and Community Safety Service) and youth organisations during Road Safety Week
 - Helping victims of domestic abuse more than ever and securing the continuation of the One Stop Shop for the next three years, via ABC funding.
85. The second question was "what do you think is the most positive part of the community safety partnership?" Answers included:
 - All the agency partners get on well and there is no in-fighting
 - The relationship between KFRS, Kent Police and ABC culminating in clear actions and direction
 - Working together to identify and agree the safety priorities for the Borough, which if dealt with outside the CSP might lead to a "my need is greater than yours" mentality, which is not helpful to the community as a whole
86. The final questions was "what would you change about how the partnership operates?" Answers included:
 - The meetings would be more tactical so we can discuss future outcomes
 - I wouldn't change anything
 - I wouldn't change anything

Conclusion

87. Ashford's CSP only exists because of the significant support given by its individual partners and by those from a whole range of organisations who are dedicated every day and night to protecting our community. This report hopes to recognise this work and thank everyone who involved.

Recommendations

88. This report is noted.

Portfolio Holder's Views

89. "We will never be complacent in our community safety work and we will continue to work with our partners to review and combat the Community Safety Partnership's priorities. However it should be noted with some pride that the Borough of Ashford now has the lowest number of recorded anti-social behaviour incidents in the county and this is a real achievement by our community".

Contact: James Hann
james.hann@ashford.gov.uk

Appendix A: Community Safety Partnership 2014/15 Strategic Assessment

Appendix B: Kent Community Safety integration – phased approach

Appendix C: Quarter 3 update on the tactical delivery plans

Appendix D: Summary of grant allocations

Appendix E: Glossary

Ashford's Community Safety Partnership

2014/15 Strategic Assessment



COMMUNITY SAFETY
PARTNERSHIP
ASHFORD BOROUGH

www.ashford.gov.uk

Ashford Community Safety Partnership

Community Safety Partnerships (CSP) are statutory crime and disorder reduction partnerships, enabling responsible authorities to develop and deliver local strategies to reduce crime and disorder. The responsible authorities work with 'cooperating bodies' to achieve their objectives.

In April 2014, the responsible authorities for the Borough of Ashford were Kent Police, Ashford Borough Council (ABC), Kent Fire and Rescue Service (KFRS), Kent Probation, Kent County Council (KCC) and the Ashford Clinical Commissioning Group who work together to tackle crime and anti-social behaviour that affects our communities. These agencies have a statutory duty to come together and work with other groups, organisations and agencies to prevent crime and disorder. Other partners include KCA, Moat Housing, Pipeline, Turning Point, Immigration & Border Control, NHS, South East Coast Ambulance Service and the Kent Drug and Alcohol Action Team.

Ashford's Community Safety Partnership completes an annual strategic assessment which refreshes the priorities and planned activities to provide the knowledge and understanding of community safety problems to the members of the CSP

The 2013/14 priorities were:

- Anti-social behaviour and environmental crime
- Domestic abuse
- Substance misuse
- Acquisitive crime
- Violent crime
- Road safety

Each priority has a lead agency tasked with developing and delivering the tactical delivery plans and updates are provided on a quarterly basis to the CSP.

Population profile

The population of Ashford has increased from 118,000 people as recorded by 2011 census to 120,100 people as per the 2012 mid-year population estimates (Office of National Statistics) – this is an increase of 2,100 people. The growth in Ashford is set to continue with current forecasts suggesting that over the next 15 years the population of Ashford will increase by a further 40% (KCC Strategy Forecasts Oct 2011). Which is the highest rate of growth expected for any Kent district.

- 63% live in Ashford Urban, this is an increase of 1% when compared to the 2011 census data.
- 37% live in Ashford Rural, which is a decrease of 1% when compared to the 2011 census data.

Ethnic Profile

Ashford has the following ethnic profile makeup:

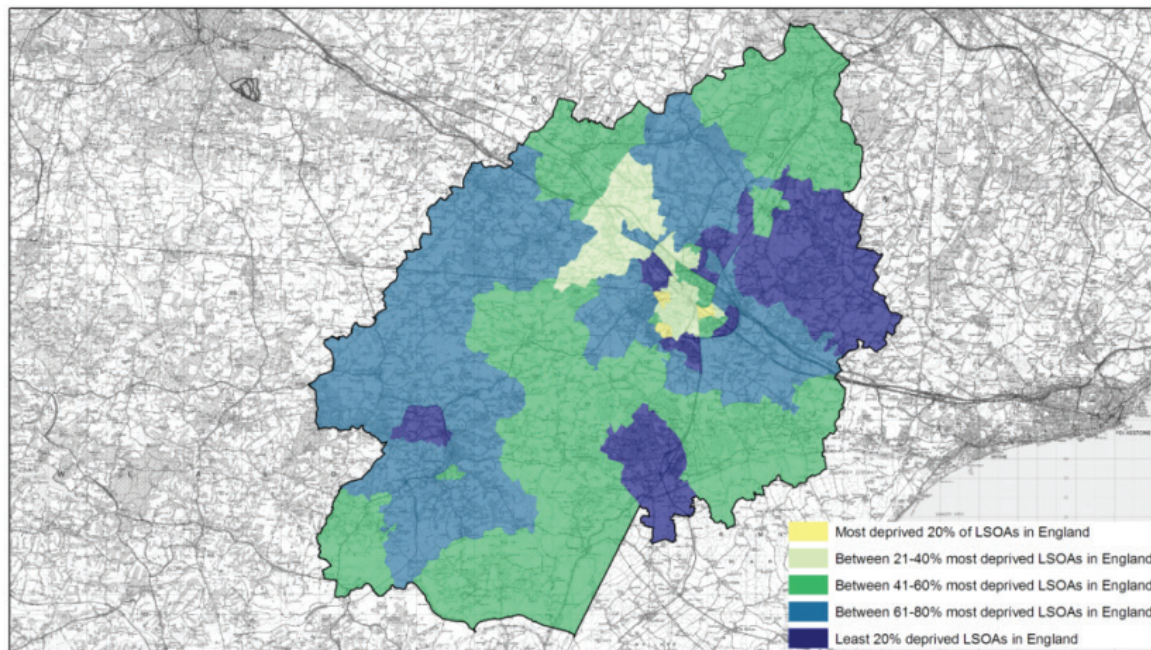
- 93.7% White Ethnic Origin of which 89.4% are White British
- 6.3% Black Minority Ethnic of which 1.9% are Asian, 0.8% African and
- 0.8% Other Mixed Origin

Deprivation

Based on The Indices of Deprivation 2010, Ashford ranks 8th out of 12 Kent districts with 1 being most deprived. This Kent ranking has not altered since 2007, however nationally Ashford has moved six positions on the national ranking from 206th in 2007 to 198th in 2010. This indicates that Ashford's level of deprivation has increased, relative to other areas in England.

The greatest levels of deprivation are found within the urban area of Ashford, particularly within the Stanhope ward. Neighbouring some of the most deprived areas of Ashford are areas with low levels of deprivation, with the least deprived areas of Ashford being found in the Park Farm North ward.

Deprivation Rank of areas within Ashford based on the overall Index of Multiple Deprivation 2010



Source: Index of Multiple Deprivation 2010, Communities and Local Government (CLG)
Produced by Research & Evaluation, Kent County Council

© Crown Copyright and database right 2011. Ordnance Survey 100019238



Foreword

The Ashford Community Safety Partnership is about working closely with a range of organisations that are central to community safety. The Partnership's work is important in terms of engaging with our local community and identifying and prioritising issues that are of particular importance and which can be tackled more effectively by working together.

Our aim is to ensure that the Borough of Ashford continues to be a safe place to live, visit and work.

This document represents an opportunity to tell people about our successes over the last 12 months and highlight some of the initiatives that we are justifiably proud of. It is also our chance to make clear what we are going to focus on going forward.

Finally this is a chance for the Chair and Vice Chair to acknowledge and express our thanks for the support provided by members of the Partnership and for the hard work and commitment to community safety provided by all the agencies and organisations involved in making our work plans come to life. We look forward to the year ahead.

Sheila Davison

Chair of the CSP and Health, Parking and Community Safety Manager
for Ashford Borough Council

Mitchell Fox

Vice-Chair of the CSP and the Chief Inspector for the Borough

Police and Crime Commissioner



On December 12th 2013 the Police and Crime Commissioner attended the CSP quarterly meeting and afterwards travelled to Tenterden to see two CSP initiatives taking place in the area. The Commissioner subsequently wrote to the CSP thanking the partnership for arranging the visit and stated:

“I was particularly impressed with the excellent Partnership working demonstrated by Ashford CSP. The enthusiasm portrayed by the staff shone through and I would like to thank all those involved in the visit. The projects being undertaken truly highlight the brilliant initiatives that can be achieved through partnership working.”

The Commissioner provided a grant of £33,000 for CSP work undertaken in 2013/14 that aligns with the Kent Crime Plan. Grants are allocated for initiatives and projects aligned with CSP priorities and in 2013/14 included the Pathways project, a contribution to the Independent Domestic Abuse Advisor, the Safety in Action fortnight and various crime prevention initiatives.

Review of performance

Over the last 12 months some key achievements of the partnership have been:

- Identified and assessed ASB perpetrators to ensure prompt appropriate actions were taken; including referral to multi-agency groups which manage perpetrators, use of appropriate sanctions such as ASBO's and Drink Banning Orders.
- Joint Family Management Programme provided intensive support to parents, where anti-social behaviour and youth crimes were evident. Worked closely with Children's Services and other partners to join up work around Ashford Supporting Families.
- KCC Wardens engaged with the local community at the earliest opportunity to assess and review impact of ASB upon a community.
- Attended all repeat victim ASB calls.
- Multi-agency operations targeted anti-social behaviour hotspots, including a robust enforcement of the Designated Public Places Order and hotspots in the night time economy
- Enabled 5 schools to have a domestic abuse input, "Love Shouldn't Hurt" to year 9 and 10 students.
- ABC providing housing and benefit advice at the One Stop Shop.
- Sought funding to support independent domestic violence advisors.
- Improved awareness of One Stop Shop and domestic abuse website.
- Delivered drug awareness briefings to youth services, volunteers working in the community, professionals and parents.
- Provided a substance misuse briefing to over 1000 Year 6 children as part of the Safety In Action fortnight
- Improved the links between the substance misuse partners and the housing agencies.
- Ran drug awareness events in schools.
- Ran drug enforcement operations, including licensing controls and other enforcement measures.
- Prioritised burglary and shoplifting prison releases for the Integrated Offender Management (IOM) programme.
- Held multi-agency Cleansweeps in areas to raise awareness & to reduce acquisitive crimes in rural and urban areas.
- Ran Smartwater and pedal cycle marking campaigns focusing on bicycles, skateboards & targeting crime hotspots.
- Improved Ashford Partnership Against Crime (WAPAC).
- Improved reporting structure with Street Pastors.

- Ran Operation Caddy in 4 schools (drug dog days), providing educational information about drug searches, demonstrating skills of sniffer dogs.
- Ran educational sessions in 6 secondary and 3 primary schools around ASB, E-safety, sexting and consequential thinking for bullying / violence
- Enforced the Designated Public Places Order in Ashford.
- Delivered Youth Engagement Around Road Safety (YEARS) programmes aimed at 16-24 year olds.
- Delivered two Pathway courses.
- Ran Bike Down training events to motorcyclists of all ages.
- Delivered road safety advice to over 1000 Year 6 children as part of the Safety In Action fortnight.

As part of the Ashford Supporting Families programme 165 families have been identified in the borough and a considerable amount of work with partners in the CSP and beyond are starting to have significant impacts on worklessness, school attendance and crime and ASB with some of the families that required a different approach to those tried in the past.





The Priorities for 2014/15

Statistical analysis of the information made available by Kent Police, Kent Fire & Rescue Service, KCC, Kent Probation and others was used to produce a scanning exercise of the data relevant to the borough of Ashford. This information (available on the community safety pages at www.ashford.gov.uk) was assessed at a strategic partnership workshop in January 2014 and led the CSP to identify the following issues as priorities for the partnership in 2013/14.

Priority	Lead Agency
Rural crime	Kent Police
Domestic abuse	Domestic Abuse Forum
Substance misuse	Public Health
Anti-social behaviour & environmental crime	Ashford Borough Council
Acquisitive crime	Kent Police
Road safety	Kent Fire & Rescue Service
Violent crime	Kent Police

1. Why has rural crime been adopted as a priority?

Although the fear of crime and risk of being a victim of crime are generally lower, the issues associated with rural crime in rural areas can be different to those in urban areas. What makes the difference is partly the nature of the target in rural crime, for instance farm machinery in remote locations, partly the experience of the victim and partly the lack of access to resources to deal with crime and disorder. Much of rural life is built on trust within small communities and therefore the impact of crime can be significant because of the breach of trust and the impact on a large section of the community who share that communal trust.

2. Why is domestic abuse a priority?

The following information has been supplied by Kent Police and relates to the period April - March.

No of incidents:

	2010/11	2011/12	2012/13	No diff	% diff	Per 1,000 pop aged 16+	County Rank
Ashford	1,307	1,448	1,452	4	0.3%	15.48	6
KCC	18,376	18,978	19,259	281	1.5%	16.28	-

No of repeat victims (includes 16-17 year olds):

	2010/11	2011/12	2012/13	No diff	% diff	Per 1,000 pop aged 16+	County Rank
Ashford	337	341	352	11	3.2%	3.75	6
KCC	4,403	4,558	4,664	106	2.3%	3.94	-

Incidents of domestic abuse continue to increase in Ashford. Information provided by Kent and Medway Domestic Abuse Strategy Group shows that Ashford has seen an increase of 70 visitors accessing the services which is an increase of 41% on the previous year and an increase of 164 visitors since 2010/11. Ashford has the highest number of visitors recorded at a One Stop Shop in the county. The busiest months are November, January, June and May.

Information provided by the Multi-Agency Risk Assessment Conferences (MARAC) and the Multi-Agency Public Protection Arrangements (MAPPA) Coordinator, for the period of April – March advises that in 2012/13 95 cases were presented to MARAC which is an increase of 31 on the previous year. The number of repeat cases for 2012/13 was 27, an increase of 14 compared to the previous year.

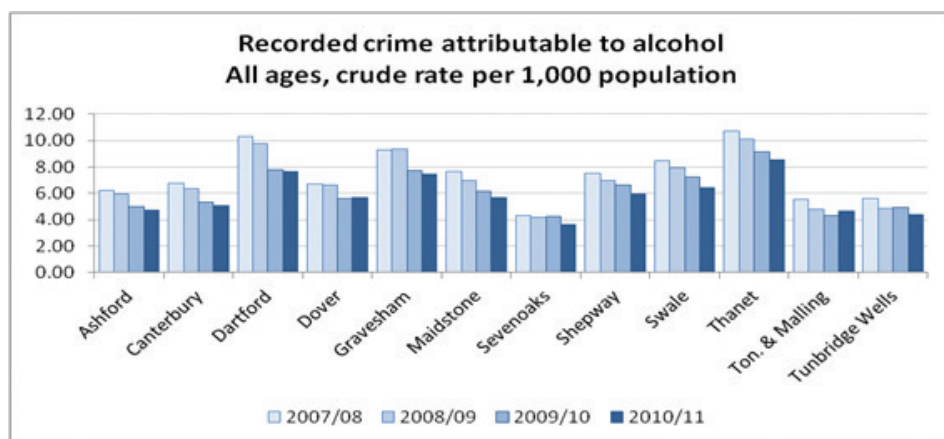
The Domestic Abuse One Stop Shop, runs at the Willow Children’s Centre and continues to be a weekly drop in service for people who are affected by issues of domestic abuse. Multiple agencies attend in order to offer free advice to both victims and other people affected by domestic abuse issues.

3. Why is substance misuse a priority?

Alcohol

Information provided by KCC Public Health for the period June 2012 to May 2013 indicates that Ashford has seen a reduction of hospital admissions where alcohol is evident from 57 admissions in 2011/12 to 49 admissions in 2012/13. It is reported that out of the 12 districts Ashford saw the largest decrease.

Recorded crime attributed to alcohol (all ages): Information supplied by the Public Health (Local Alcohol Profiles for England) for period of April to March illustrates that Ashford has seen a decrease since 2007/08 year on year of crime attributed to alcohol and in 2010/11 532 crimes were recorded.



Drugs

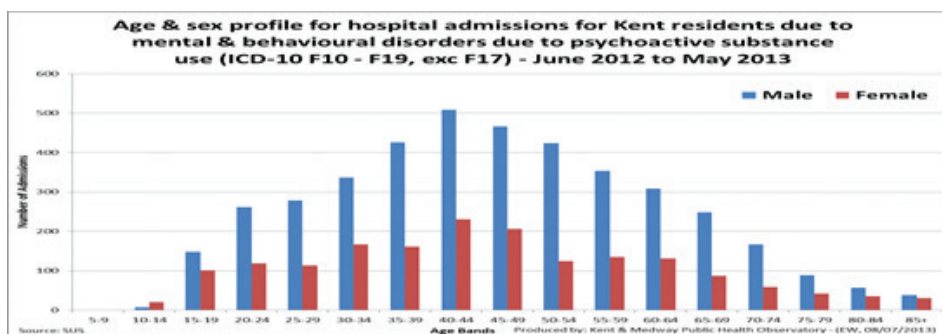
Based on information provided by Kent Police for the period April 2012 to March 2013, Ashford has experienced an increase in drug offences from 187 to 225; an increase of 38 offences (20.3%). Victoria ward has the highest volume of drug offences with 64 recorded.





Psychoactive Substance Use

Ashford has seen an increase in admissions to hospital from 214 in 2011 to 250 in 2012/13 for mental and behavioural disorders related to psychoactive substance use. The age group with the highest recording for both male and female is 40 – 44 years.



4. Why is Anti-social behaviour and environmental crime a priority?

Anti-social behaviour has a huge impact on victims' quality of life. This is profoundly felt by repeat and vulnerable victims. The information provided in this section is provided by the Kent Police Partnership Pack but unfortunately doesn't break down the type of anti-social behaviour (ASB) incidents reported.

	2010/11	2011/12	2012/13	diff	% diff	Per 1,000 pop	County Rank 2011/12	County Rank 2012/13
Ashford	3,568	3,826	3,628	-276	-7.1%	30.64	5	6
KCC	53,232	51,318	46,700	-7,644	-14.1%	31.85	-	-

The data provided above shows the number of incidents of ASB reported to Kent Police for the Ashford borough has decreased by 276 incidents. However, recent statistics obtained have reported that between April 2013 and 23 January 2014 the number of ASB cases was 2103, which is an impressive reduction of 1723 and at the present moment ranks 4th in the county.

Last year it was reported that Park Farm and Stanhope were most affected by ASB however this year the location has changed with Victoria Ward having the greatest volume with 758 reports.

It is reported that the public perceive vandalism, graffiti and deliberate damage; rubbish and litter; and fly tipping to be the most problematic types of ASB.

It is expected that in the coming year the Anti-social Behaviour, Crime and Policing Act 2014 will come into effect, introducing new legislation to tackle persistent problems. The Act will also introduce the option for members of the public to ask for an ASB case review and the CSP will work with its partners to ensure that it has an appropriate mechanism to review locally raised issues.

Fly Tipping

Fly tipping incident figures reported by local authorities through Flycapture show an increase when compared to 2010/11 and 2011/12.

Below is a table displaying the annual summary of fly tipping incidents as reported by local authorities through Flycapture.

	2005/6	2006/7	2007/8	2008/9	2009/10	2010/11	2011/12	2012/13
Ashford	1,177	1,450	1,177	1,123	1,049	876	874	946
KCC	30,692	27,854	21,196	12,963	11,970	10,316	11,620	12,135

The locations where fly tipping has been reported in the past few months include the Chilmington area (i.e. Mock Lane, Bartletts Lane and to a lesser extent Chilmington Green Lane). Other areas that also experience an increased level of fly tipping at present are around rural Great Chart (e.g. Goldwell Lane, Daniels Water, Etchden Road).

Some areas have experienced fly tipping in the past year, such as Warren Lane and the Newlands Road & Hurst Lane area (Charing Heath), but this appears to have decreased since November. Fly tipping outside flats / bin stores still remains high. For example the 6 blocks in the Hillbrow Lane area, Bybrook Road, Newtown and in some areas of Stanhope continues to be a problem with bulk items being dumped at the rear of properties.

Criminal Damage

Ashford is currently ranked 4 out of the 12 districts with 1 being the lowest. There has been a year on year decrease of criminal damage in the Ashford borough, with a reduction of 57 crimes recorded in 2012/13 when compared with 2011/12. The areas in Ashford that have suffered the greatest volume of criminal damage were the Victoria and Stanhope wards.

5. Why is acquisitive crime a priority?

Acquisitive crime is broken down into a number of groupings which are: fraud, metal theft, robbery, shoplifting, theft and handling stolen goods, theft from motor vehicle, theft of motor vehicle, theft of pedal cycle, and theft offences.

Shoplifting, theft and handling of stolen goods, theft from motor vehicles, theft offences, burglary thefts, theft of motor vehicles and pedal cycles all appear to have decreased in the year 2014/15 compared to 2013/14, although the statistics were not available to compare year on year when this assessment was made.

6. Why is road safety a priority?

Information provided by KCC Transport Intelligence reports for the period of April to March that Ashford has seen an increase from 492 Road Traffic Collisions (RTC's) to 522 when compared to same period in 2011/12, with an increase of 29 reports. Of these figures 32 were related to casualties under the age of 16 which was a reduction of 34 when compared to figures the previous year. It is also reported that Killed and Seriously Injured (KSI's) has increased by 37, the highest increase seen in Kent, Ashford is now ranked 12 (highest) in the county.

Figures reported via the Kent Crime Victim Survey showed that the public perception on speeding vehicles continues to remain the same in Ashford. However it was reported that "slippery road due to weather" was recorded in the highest number of collisions in Ashford (148), 39 more than the district average. "Road layout" also featured highly and was recorded in 48 collisions in the last 3 years.

The map overleaf show routes with the highest total of collisions and highest collisions per kilometre rate in Ashford.

It is also noted that Ashford's residents that have been involved in a collision in the Ashford borough is 72.3%, recording the highest proportions when compared against the rest of Kent.

The statistics indicate that the three main vehicle types involved in RTC's are cars, motorcycles and goods vehicles. The top three age groups involved in RTC's are 20 – 24 year olds, 40 – 44 year olds and 15 – 19 year olds closely followed by 45 – 49 year olds.





This map is based upon Ordnance Survey material with the permission of Ordnance Survey on behalf of the Controller of Her Majesty's Stationery Office
 © Crown Copyright. Unauthorised reproduction infringes Crown copyright and may lead to prosecution or civil proceedings. 100019238 (2013).

7. Why is violent crime a priority?

Violent crime has high physical, emotional and financial consequences for individuals, families and society. Serious violence is a significant influence on people's fear of crime. Violence against the person has increased in the borough. Violent Crime includes assaults, sexual offences, violence against the person, and violent crime. Although all violent crime is of concern, it is worth noting that the vast majority of recorded violent offences in the borough were of a less serious nature.

Information provided by Public Health indicates that there has been a reduction in deliberate self-harm which resulted in an admission to hospital in Ashford which was the lowest number of admissions in the county with 178. The highest ranking age and sex profiles for being admitted to hospital for self-harming in males was 20-24 years and females 15-19 years.

Police and Crime Commissioner's Police and Crime Plan

The PCC's priorities for 2013-17 have recently been revised:

- Cutting crime and catching criminals
- Ensuring visible community policing is at the heart of Kent's Policing Model
- Putting victims and witnesses first
- Protecting the public from serious harm
- Meeting national commitments for policing
- Delivering value for money

One of the core principles underpinning this Police and Crime Plan is the value of partnership working and the recognition that crime and anti-social behaviour reduction cannot be delivered by the Police alone. For communities and victims, it does not matter which agency is responsible for the issues they face; what they care about is whether or not the issue is being resolved.



Tactical Delivery Plans

The tactical delivery plans are a set of objectives that support the priorities of the CSP. They are included below to give focus to drive improvements, encourage regular review of the objectives and to provide ownership of the goals and actions.

The tactical delivery plans make it clear to all exactly what has to be achieved, when and by whom and enables regular review against the schedule.

Ashford CSP believes the following tactical delivery plans promote the PCC's key community priorities.

Tactical Delivery Plan for Road Safety 2014/15			
Action	Target	Evidence	Main Partner
Deliver 2 scooter academy programmes to reduce casualty rates amongst 16-17 year old moped riders	Use local, county and national partner's to increase the knowledge amongst young motorcyclists of which types of roads most fatal and serious crashes happen & what to do if a crash occurs	Attendance at event, awareness levels before & after event. Reduction in KSI and casualties amongst P2W riders	ABC -Community Safety Services
Run 2 Biker Down training event to target motorcyclists of all ages and include ASF young people onto the course as an intervention	Teach practical skills to help avoid being involved in a crash & advise on what to do if first on the scene of a crash where someone is injured	Attendance at event. Awareness levels before & after event. Reduction in KSI, engagement tool for ASF	KFRS
Deliver road safety advice to over 1000 year 6 children as part of the Safety In Action fortnight	Raise awareness amongst year 6 pupils on road safety, including pedestrian and cycle safety	Numbers targeted & feedback after event	KCC Road Safety
Deliver 2 Drive 4 Life events to parents and young drivers	Project run by KFRS designed to deliver a common safety message to parents and young drivers	Numbers attending and evaluation by KFRS	KFRS
Deliver "Licence to Kill" event to pupils attending academies, schools and sixth form colleges. Explore the circumstances and consequences of a road crash	Provides safety advice & raises awareness of year 12 & 13	Numbers targeted and feedback after event	KFRS
Run an Ashford road safety media campaign targeted at Ashford residents based on data from the CSP profile	Ashford residents who have been identified in the CSP profile as making up 72% of the district casualties	Evaluation carried out at events, clean sweeps and engagement opportunities on the campaign awareness	KFRS
Deliver 1 KFRS engagement car intervention as part of a multi-agency event	Raise awareness amongst young drivers in a location where young drivers gather	Numbers targeted and feedback after event	KFRS
Deliver 1 school based YEARS programme duplicating Homewood model possibly John Wallis	Targeting young driving age young people 17-24 identified as highest risk of KSI and casualties	Numbers attended of driving age and evaluation of thoughts and behaviours	KFRS
Deliver 1 multi agency Restorative Justice event	Targeting drivers committing minor offences to give chance for awareness rather than enforcement	CSP profile highlights minor driving issues as causing KSI and casualties	Kent Police
Target a car showroom in Ashford to hold an event to raise road safety awareness	New and experienced drivers potentially purchasing cars	Numbers attended and evaluation at the event	KCC Warden supervisor
School parking campaign to top 3 schools with parking issues	To reduce the risk of child casualties outside of schools from parents and road users inconsiderate parking	Ongoing issues outside of school warrants an awareness and enforcement campaign over the year	KCC
Deliver 1 speed reduction day on Hythe road, Ashford A292	To reduce the number of KSI and casualties on this road	CSP profile highlights the A292 as a hotspot road for incidents	Kent Police

Tactical Delivery Plan for Road Safety 2014/15 continued

Action	Target	Evidence	Main Partner
Use mass messaging techniques to raise awareness amongst target groups of key road safety issues	Deliver a countywide programme of campaigns to raise road user awareness of key road safety issues (e.g. speed, drink drive, drug drive, mobile phones, seatbelts, 'be bright be seen' and motorcyclist safety), which will be present throughout Ashford	Draft campaign plan developed, with a specific focus for most months of the year. Specific reach to road users in Kent is published and evaluation of success is captured through recall surveys for some activities (also available is recall of previous campaign periods)	KCC Road Safety
Provide Young Driver Education to 16-18 year old students	Young Driver Education offered to all Sixth Form schools and delivered to those who request it. Specifically deliver YDE to 4 schools in Ashford	Numbers dealt with and feedback from students and school staff	KCC Road Safety
Provide young driver / passenger safety education to 16-18 year old students	Offer the Speak Up Theatre in Education production to all sixth forms schools and respond to demand within the scope of the arranged tour - provide to at least 2 Ashford schools	Numbers dealt with and feedback from students and school staff	KCC Road Safety
Provide advice to parents of young passengers on the correct choice and fitting of car seats	Arrange 1 Good Egg Car Seat Clinic in Ashford to provide advice to parents on selection and fitting of appropriate child car seats - identifying those fitted poorly, incorrect for the child or that are incompatible with the vehicle being used	Number of checks carried out and production of summary of results	KCC Road Safety
Use primary school pupils as a conduit between the KCC Road Safety Team and the school community to promote key road safety messages	Provide the Junior Road Safety Officer scheme to 6 primary schools in Ashford and encourage them to participate in the annual JRSO conference to identify key priorities and actions	Number of schools participating in the scheme (Inc. pupil roll reach) and attending the Conference	KCC Road Safety
Promote key safety messages to child pedestrians and cyclists in an engaging and fun way	Deliver the Smart Brothers Road Show to primary schools (Key Stage 1+2) across the county and respond to Ashford schools who request it - delivering it to at least 4 schools	Number of schools participating (Inc. pupil numbers) and feedback from school staff	KCC Road Safety
Illustrate the benefits of using hi-visibility clothing materials as a way of demonstrating how child pedestrians and cyclists can reduce their vulnerability, in an engaging and fun way	Deliver the B-Viz theatre show to primary schools (Key Stage 2) across the county and respond to Ashford schools who request it - delivering it to at least 4 schools	Number of schools participating (Inc. pupil numbers) and feedback from school staff	KCC Road Safety
Encourage safer cycling amongst children by providing the skills to use the road network more safely	Make available the Bike ability child cyclist training scheme for primary schools (Key Stage 2) that request it	Number of pupils that participate	KCC Mobility and Safety
Enhance pedestrian skills through the provision of practical pedestrian training	Deliver the Small Steps programme to primary schools (Key Stage 1) who respond to the offer	Number of pupils that participate	KCC Mobility and Safety
Extend the uptake and introduce the use of active green travel in targeted primary schools	To increase road safety awareness alongside the co benefits of increased activity in primary school children and their extended families, decreased congestion and parking problems around school entrances and improved air quality by reducing motor vehicle use	Survey data produced in schools and sent on line to the delivery partner (accessible by ABC), indicating increased active green travel, adjusted against standardised data, to avoid bias	KM Charity group

Tactical Delivery Plan for Violent Crime 2014/15

Action	Target	Evidence	Main Partner
Continue to investigate implementation of drink banning orders and seeking provision of support from substance misuse service providers	Informing and advising people on sensible drinking, promote responsible socialising and empower local communities to tackle alcohol related issues	Quantative Feedback on perceptions of violent crime related to alcohol misuse before and after campaign. Reduction in criminal damage	Kent Police
Explore opportunities for safer socialising awards or similar in a minimum of 5 venues	Identify a minimum of 5 venues and what is required to achieve the safer socialising award or similar	Minimum of 5 venues identified and plan of action developed and implemented	AWPAC
Carry out a minimum of 3 multi agency operations throughout the year within the night time economy. Such as Op Century	To work in partnership to carry out minimum of 3 operations during the year	Reduction in violent crime and increase in feeling of public safety	Kent Police
Proactive multi agency support to major sporting events	To work in partnership to effectively manage activites around major supporting events in the attempt to reduce violent crime	Reduction in violent crime	Kent Police
Establish a Town Net Radio scheme within Tenterden. Target of a minimum of 10 members by June 2014	Increase use of Town Net Radios to improve exchange of information & prevent and deter crime in the Tenterden	Reduction in Theft and Handling. Decrease in shoplifting offences	AWPAC
Review and comment on the ABC's Licensing Act policy, in light of government changes to legislation	Draft Policy for consultation by mid 2014. All regulatory authorities respond to consultation	Numbers attending. Reduction in violent crime associated with NTE	ABC - Licensing Service
Coordinate a delivery of safety advice to a minimum of 6 educational establishments	Educational visits to 6 secondary schools	Number of schools/pupils engaged with. Reduction in youth on youth crime	KCC Wardens
Incorporate education on violent crime in workshops in safety in Action	Raise awareness about violent crime amongst approx. 500 youths	Audit of students reached publication of statistics in press release for further awareness	Community Safety Services
Delivery of 3 community engagement days, focusing on priority wards	Partners to engage with the community to assess & review violent crime issues	Audit of residents reached publication of statistics in press release for further awareness	Kent Police
Competition to youth services to hold youth activity in a unit at the county square	To employ youth service to engage with young people during school holiday periods	To reduce the youth on youth violent crime reduction rates.	Community Safety Services
All new DPS to benefit from joint visits	All new DPS's to be visited within the first two months	To build positive relationships	ABC - Licensing Service

Tactical Delivery Plan for Acquisitive Crime 2014/15			
Action	Target	Evidence	Main Partner
Develop "Rapid Response" roadshows for the areas experiencing high levels of acquisitive crime, to raise awareness & provide practical advice	Roadshow to be visible within 7 days of the area being identified. Reduction in acquisitive crimes in the area	Qualitative feedback & reduction in theft and handling offences in target areas	KCC Wardens
Prioritising recent burglary and shoplifting prison releases for IOM programme	Increase in offenders involved in IOM & subsequent reduction in reoffending rate	Reduction in reoffending rates	Kent Probation
Use of Multi-agency clean sweeps in areas to raise awareness & reduce acquisitive crimes in areas	Reduction in acquisitive crimes in the area. Raised awareness	Qualitative feedback & reduction in theft and handling offences in target areas	ABC - Community Safety Service
Smart water & pedal cycle marking campaigns focussing on bicycles, skateboards & target crime hotspots, including Firefit to raise interest if available and promote use of property marking website	Reduce thefts & increase % of items returned to owners. Increase in Community groups running property marking events. Increase of % of items returned to owners	Reduction in theft and handling & increase in stolen property returned to owners	KCC Wardens
Utilise an empty shop premises for training to educate shop assistants/ keepers to learn best practices for keeping shoplifters out of their stores. Develop Training brief (retail crime best practice target guide) for targeting both new and existing staff to make them aware of their responsibilities, assistance available and the law. Promote Operation Aladdin	Reduction in theft and handling	Increase in reports to APAC of incidents. Reduction theft and handling	Kent Police
Expand and Improve Ashford Partnership Against Crime (APAC) membership to set up and establish membership in Tenterden and other locations	Increase use of Town Net Radios, improve exchange of information & images to prevent & deter crime by challenging potential offenders, increase in exclusion notices and reduction in theft and handling. Expand Shopwatch to other areas within the Borough. Set up and establish Tenterden Shop Watch, Increase membership to cover the footprint	Increased APAC Membership and expand to new locations	AWPAC
Improve Retail imposed banning orders - develop the "Ban from one, Banned from all" approach	To identify the top 10 sites to work in partnership to implement banning orders working across stores. Photos of banned individuals shared with monitoring centres. Partnership approach to enforced banning orders.	Number of banning orders in effect across top 10 outlets. reduction in theft and handling offences	AWPAC
Improve joined up working and sharing intelligence with various programmes i.e. JFMP and ASF	Improve sharing of information with various agencies to identify repeat offenders or deliver early intervention to new offenders	Regular sharing of information. Reduction in repeat offending	ABC - Community Safety Services
Develop presentation package for delivery to Parishes/forums advising of Community Safety activity	Development and delivery of presentation	Number of presentations delivered	KCC Wardens
Bike Card initiative creation of a credit card sized document for recording bike details such as: serial number, make, model and colour	To roll out to stores selling bikes and provide to purchasers/ customers	Number of stores supporting the initiative	ABC
To purchase and provide Motion Detectors that light up to act as deterrent to criminals to reassure repeat victims	To distribute among repeat victims to provide reassurance	Number distributed and increase feeling of security/safety via (KCVS) Kent Crime Victimisation Support	KCC Wardens
Produce information leaflet advising of various products and services that could assist with home security and safety	Distribute leaflet to high risk areas and repeat victims	Number of leaflets distributed Reduction in crime to location	KCC Wardens

Tactical Delivery Plan for Rural Crime 2014/15

Action	Target	Evidence	Main Partner
Hold intelligence collecting meetings every 6 weeks	Meetings held every 6 weeks and information to result in reduction in rural crime	Reduction in rural crime figures	Kent Police
Publicity campaign to inform the public and agencies on problems and solutions around illegal fly-tipping	Improved reporting of incidents. Improved evidence gathering from partner agencies	Reduction in fly-tipping	ABC - Health, Parking and Community Safety
Multi-agency fly-tipping enforcement campaigns and use of overt CCTV in fly-tipping hot spots	3 multi-agency events targeting fly-tipping hot spots, including in rural cleansweeps. Use of overt CCTV to reduce offending	Reduction in fly-tipping	ABC - Health, Parking and Community Safety
Run Operation Innovate which involves the local community reporting suspicious vehicle movements to patrolling Police Officers	Run two operations involving Kent Police, HMRC and KCC Wardens	Delivery of a minimum of two operations and increase in intel being provided and shared	Kent Police
Use of Smart Water and other property marking devices to protect property	Use of property marking devices in multi-agency events, at public events, farmer's markets, etc	Reduction in acquisitive crime in rural areas	KCC Wardens



Tactical Delivery Plan for Anti Social Behaviour 2014/15

Action	Target	Evidence	Main Partner
Deliver 2 Youth Engagement Around Road Safety (YEARS) programmes aimed at 16-24 year olds	Target young people with motoring offences, those with concern around motoring-related activity and those identified as risk takers	Numbers targeted and reached	KFRS
Ensure victims of ASB receive appropriate support, including early identification of vulnerable & repeat victims via continuation of Operation Claxon , a community Trigger approach on a one monthly basis of any high risk area in the Borough , also specialist training on RAM's	Increase in satisfaction of the those who report ASB with overall service provided by Kent Police	Increase in satisfaction with the way police deal with ASB	Kent Police
Early identification & assessment of perpetrators to ensure appropriate actions are taken; including referral to multi agency groups which manage perpetrators, use of appropriate sanctions such as ASBO's & closure orders	Reduction in the number of anti-social behaviour incidents (including arson) in Victoria & Stanhope wards and town centre	Reduction in ASB and Criminal damage	Kent Police
Provision of Joint Family Management Programme to provide intensive support to parents, where anti-social behaviour & youth crimes are evident. Work closely with children's services & other partners to join up work around the "Supporting Families"	To reduce ASB committed by young persons on the programme to reduce first time entrants. Best use and explore - analysis and profiling of young people to identify needs	Reduction in ASB and criminal damage	Kent Police
KCC Wardens to engage with the local community at the earliest opportunity to assess & review impact of ASB upon a community	Reduction in total number of anti-social behaviour incidents	Reduction in ASB and criminal damage	KCC Wardens
Pilot Community Resolution Panels in Stanhope and Victoria wards, using a restorative approach to tackling low level anti-social behaviour & neighbour disputes	Increase in satisfaction of those who report ASB with overall service provided by Kent Police	Increase in satisfaction with the way police deal with ASB	ABC -Community Safety Service
Attend all repeat victim ASB calls	To attend all repeat victim ASB calls	Reduction in ASB and Criminal damage	Kent Police
Multi agency operations targeting anti-social behaviour hotspots, including a robust enforcement of the DPPO and hotspots in the night time economy	Reduction in the number of anti-social behaviour incidents in target areas	Reduction in ASB and Criminal damage	Kent Police
To hold school surgeries giving young people the opportunity to discuss crime concerns	To raise awareness in at least 4 schools of ASB & its effects. To learn of emerging patterns affecting young people	Audit of students reached and qualitative feedback to CSP	ABC Community Safety Service
6 monthly EVA's in Stanhope and Victoria wards to determine multi agency response to documents issues	Improvement in environment in Stanhope and Victoria Wards	Reduction in ASB and Criminal damage	ABC Community Safety Service
Social Housing providers to engage in noise related issues and to take enforcement action when appropriate	Reduction in noise hotspots associated with residents of Social Housing	Reduction in noise related ASB	ABC -Community & Housing
Provide Graffiti cleaning kits to community groups and aim to increase the number of community groups accessing graffiti removal kits and the number of clean ups	Increase Local Communities' role in removing environmental crime	Quantitive feedback on number of kits & groups	ABC - Street Scene & Open Spaces
Action around noise - Actively sharing and monitoring information with partner agencies	Improve sharing practices between agencies to highlight repeat offenders/ locations	Reduction in noise related ASB incidents	KFRS
Deliver 1 x 5 week Pathway course	Provide work skills to 16 - 24 year old NEETS , such as team work, problem solving & communication & health and safety qualification	Numbers targeted and reached. Reduction in KSI	KFRS
Fire fit engagement	To provide fire fit to up to 800 secondary school children	Number of secondary School children engaged with KFRS	KFRS
Engagement at Community Forums & PACT meetings to be attended by PCSO's & other agencies as appropriate	To collate meeting schedules and arrange to attend regularly	Number of meetings attended and feedback	PCSO's
Develop links with Mental Health & identify resources needed to commission appropriate Services	Establish contacts and build working relationships	Feedback of progress.	Kent Police
Establish Community Trigger process	Review current processes to ensure meet requirements of the Community Trigger process	To be implemented by 1st October 2014	ABC - Community Safety Services
Generic Enforcement roll out. Litter enforcement pilot within Ashford and vicinity	Establish and implement roll out of generic enforcement within the Ashford borough	To be implemented by 31st March 2015	ABC - Health, Parking and Community Safety Services

Tactical Delivery Plan for Domestic Abuse 2014/15

Action	Target	Evidence	Main Partner
To produce a program exploring healthy relationships within secondary schools	To engage with year 9 and 10 students where possible	Audit of students reached, publication of statistics in press release to further raise awareness	Domestic Abuse Forum
Housing and benefit advice to continue to be offered at the One Stop Shop	Regular attendance at One Stop Shop and evidence of providing value for money	Qualitative feedback research amongst One Stop Shop staff	ABC - Community & Housing
Dash and IDVA awareness training for Neighbourhood Police Officers	All PC's to visit the One Stop Shop	Track number of officers trained. Increase in average monthly visit to One Stop Shop	Domestic Abuse Forum
Continued training for partners (KCC Wardens, Fire Officers, etc) paying visits on domestic abuse	Run a series of training events to raise awareness to help signpost victims to One Stop Shop, etc	Audit of staff reached, publication of statistics in press release to further raise awareness. Increase in average monthly visits to One Stop Shop	ABC -Community Safety Services
Seek funding to support Independent Domestic Violence Advisors and gain commitment for future funding	To obtain funding for IDVA post through external funding and partner agencies	Secure funding and confirm future funding commitment	ABC -Community Safety Services
More advertising of Domestic Abuse services surrounding the World Cup	CSP to encourage and support any forum campaign that may be held at any time	Qualitative feedback research amongst forum members	ABC -Community Safety Services
Partners to provide continued support to the DA forum over the coming year	Regular attendance by appropriate partner agencies at the DA forum. ABC housing staff to commit to training possibilities	Increase in average monthly visits to One Stop Shop	All Partners
Public awareness day to be held to celebrate the 4th anniversary of the One Stop Shop	Joint event to be held in a central location	Increase in average monthly visits to One Stop Shop	Domestic Abuse Forum
Replacement source sought for the freedom training co-ordinator post	To create a central point for all referalls	Track number of individuals trained. Increase in average monthly visits to One Stop Shop	Domestic Abuse Forum

Tactical Delivery Plan for Substance Misuse 2014/15

Action	Target	Evidence	Main Partner
Multi agency awareness day centred around the Stour Centre (undercroft) and skate park	Raise awareness about drug abuse & sources of advice & assistance raised amongst youths	Audit of students engaged with publication of statistics in press release for further awareness	ABC - Community Safety Services
Deliver awareness briefings to include caffeine and new psycho-active substances to youth services, volunteers working in the community & professionals and parents through schools parent evening. Turning Point to deliver presentation on their services	Raise awareness about substance misuse raised amongst Parents, Teachers, Flo workers and Secondary schools	Qualitative feedback research amongst attendees	Turning Point
Develop the links between the Drugs Liaison Officer and Housing as a standard to roll out to Social Housing providers	Issues involving substance misuse to be notified to police in advance for a coordinated response	Improve links between agencies to assist clients maintaining their tenancies	ABC - Community & Housing
Safety in Action fortnight briefing to approx. 1000 year 6 children	Awareness about substance misuse & sources raised amongst approx. 500 youths	Audit of students reached publication of statistics in press release for further awareness	ABC - Community Safety Services
Involvement of specialist staff (e.g. KCA & Turning Point) in the IOM & TF (Supporting Families) initiative	Ensure specialist drug agencies are aware of individuals and families signed up to signed up to the two initiatives	Increase number of people entering treatment services	Turning Point KCA
Share drug paraphernalia information found with partner agencies	KDAAT, Kent Police, KCA & Turning Point regularly updated on drug paraphernalia finds by contractors, KCC Wardens, Dog Wardens, Community Enforcement Officers, Waste and Green Team contractors, Turning Point to make available outreach service via their Roving Recovery Vehicle	Qualitative feedback from Partners to CSP	ABC - Community Safety Service
Improve the links between the substance misuse partners and the Housing agencies	Regular contact, resulting in a multi agency approach to substance misuse related tenancy issues. Presentation to assist knowledge of drug and paraphernalia for partners	Increase in number of people entering treatment services. Reduction in the number of deaths through substance misuse	ABC - Community & Housing
Run drug awareness events in schools to include psycho-active substance information	Operation Caddy & Risk It run in secondary schools/higher education establishments	Audit of students reached publication of statistics in press release for further awareness	Kent Police
Run drug enforcement operations, including licensing controls and other enforcement measures to ensure that Licensed Premises do not encourage binge drinking, or sell to those underage or allow drug dealing. New DPS licensing visits to incorporate drug swab analysis	12 licensed premises to be drug swabbed and action plans implemented as necessary. Drug swab of premises to be included in all 'New Landlord first visit' by licencing	Details premises drug swabbed and outcomes reported. Evidence of action plans developed and implemented	Kent Police



Appendix D: Glossary

ABC	Ashford Borough Council	KCC	Kent County Council
APAC	Ashford Partnership Against Crime	KDATT	Kent Drug and Alcohol Action Team
ASB	Anti-social behaviour	KFRS	Kent Fire & Rescue Service
ASBO	Anti-Social Behaviour Order	KIASS	Kent Integrated Adolescent Support Services
CCTV	Close Circuit Television	KSI	Killed or seriously injured
CSP	Community Safety Partnership	MAPPA	Multi-Agency Public Protection Arrangements
DPPO	Designated Public Places Order	MARAC	Multi-Agency Risk Assessment Conferences
IDVA	Independent domestic violence advisor	PCSO	Police Community Support Officer
IOM	Integrated Offender Management	RTC	Road Traffic Collisions
KCA	An organisation delivering drug, alcohol and mental health services	YEARS	Youth engagement around road safety
KCAP	Kent Community Alcohol Partnership		

Appendix B: Kent Community Safety integration – phased approach

Initial Phase

1. The initial phase would be to create a co-located joint community safety team which would be made up of staff from each of the three organisations. To minimise disruption the team would be based in accommodation located in the Maidstone area. Staff would remain under the management and control of their own organisation. The main duties of the team would be to;
 - Undertake strategic assessments to enable and support the production of Countywide and District community safety plans.
 - Undertake a review of the current County Community Safety Plan.
 - Undertake a review of each organisations schools education activity and report on the feasibility of combining this activity.
 - Manage and provide administrative support to any domestic homicide reviews that may be required.
 - Review current and future community safety campaigns with the ambition of creating more efficient joint campaigns.
 - To reduce duplication by providing joint co-ordination to develop common approaches to changes in procedures and legislation.
 - Promote the work of the joint team amongst other county partners such as health and probation/ community rehabilitation companies.
 - To improve service to the district CSP's and CSU's and provide a single point of contact for enquiries.
2. The Steering Group have reviewed the impact of these changes and the time needed to relocate the necessary staff. It is anticipated that the initial phase could be concluded by mid-2015.
3. Discussion with Kent Fire and Rescue Service has indicated that they are able to provide suitable accommodation for the amalgamated team at its Loose Road site. This would be the subject of a 'lease agreement' but the use of the accommodation would be at no cost to each organisation.

Second Phase

1. The second phase (mid-2015 onwards) would be to review the successes of the initial phase and to build on the improvements and efficiencies achieved. The scope of the work which could be undertaken within the second phase would be led by the review, but may include the following;
 - Joint review and report on initial phase to each partner organisation and the County CSP.
 - Examine the possibility of pooled budgets and greater financial integration of community safety resources of each organisation.
 - Undertake a feasibility study of amalgamating team management arrangements.
 - Scope the feasibility of team members being able to represent all three organisations at meetings across the county.
 - Approach other organisations to join the team.
 - Extend the delivery of joint campaigns (e.g. road safety) to support the Community Safety priorities across the County.



Tactical Delivery Plan for Road Safety 2014/15

Action	Target	Evidence	Main Partner	Progress				Quarterly Reporting 1 Apr - 30 June 2014	Quarterly Reporting 1 Jul - 30 Sept 2014	Quarterly Reporting 1 Oct - 31 Dec 2014	Quarterly Reporting 1 Jan - 31 Mar 2015
				Q1	Q2	Q3	Q4				
1 Deliver 2 scooter academy programmes to reduce casualty rates amongst 16-17 year old moped riders.	Use local, county and national partner's to increase the knowledge amongst young motorcyclists of which types of roads most fatal and serious crashes happen & what to do if a crash occurs	Attendance at event, awareness levels before & after event. Reduction in KSI and casualties amongst P2W riders	ABC - Community Safety Services					A consultation has been completed and project has been agreed in principle. A further consultation with users of powered 2 wheelers will take place between 16th-19th June to establish needs before going any further. Once this is complete it will go back to management team for approval.	This project has been placed on hold by KFRS due to budgetary constraints	Being plotted in alternative location in county. Review on pilot will be carried out and circulated.	
2 Run 2 Biker Down training event to target motorcyclists of all ages and include ASF young people onto the course as an intervention	Teach practical skills to help avoid being involved in a crash & advise on what to do if first on the scene of a crash where someone is injured	Attendance at event. Awareness levels before & after event. Reduction in KSI, engagement tool for ASF	KFRS					3 events have already ran in Ashford and will continue to do so. All future dates are booked to capacity.	Work ongoing, updates on numbers attending and outcomes to be submitted. Dates booked in on a regular basis.	Work ongoing.	
3 Deliver road safety advice to over 1000 year 6 children as part of the Safety In Action fortnight	Raise awareness amongst year 6 pupils on road safety, including pedestrian and cycle safety	Numbers targeted & feedback after event	KCC Road Safety					Complete - Safety In Action event being held 16th - 27th June 2014.	Debrief to be held and plans discussed for next years event.	Debrief held, all partners keen to be involved with the delivery of another Safety In Action 2015 although securing dates and venue is progressing slowly.	
4 Deliver 2 Drive 4 Life events to parents and young drivers	Project run by KFRS designed to deliver a common safety message to parents and young drivers.	Numbers attending and evaluation by KFRS	KFRS					This project has lost momentum a little - KFRS to chase in order to rejuvenate.	KFRS and Police liaising over delivery of the operation. Drive for life is under assessment by KFRS to quantify effectiveness.	On hold whilst a review is being undertaken.	
5 Deliver "Licence to Kill" event to pupils attending academies, schools and sixth form colleges. Explore the circumstances and consequences of a road crash	Provides safety advice & raises awareness of year 12 & 13	Numbers targeted and feedback after event	KFRS					This event is scheduled for November 2014 with all schools being invited to attend.	Licensed to Kill is due to be run across the County this autumn. Ashford schools will receive invites from KFRS CS directly. They will most probably attend sessions in Maidstone.	Delivered in November at Maidstone and was attended by Ashford Secondary Schools.	

6	Run an Ashford road safety media campaign targeted at Ashford residents based on data from the CSP profile.	Ashford residents who have been identified in the CSP profile as making up 72% of the district casualties.	Evaluation carried out at events, clean sweeps and engagement opportunities on the campaign awareness.	KFRS				A brief is required in order for ABC comms team to develop further. SSmith will pull together some ideas and pass back to the working group for discussion prior to passing to ABC comms.	Passed to KFRS Media section and Senior PM due to South Group PM leaving the service.	New PM settling in to post and at present no further work undertaken on this action.
7	Deliver 1 KFRS engagement car intervention as part of a multi-agency event	Raise awareness amongst young drivers in a location where young drivers gather	Numbers targeted and feedback after event	KFRS				The engagement car has been requested to attend the Sk8Side Summer Jam event. Funds will be sought by KFRS in order for this to happen and be manned accordingly.	This took place. Discussions underway at CSU regarding future events possibly in the Dover Place Car park and surrounding area. Possibly conjoined with a road safety RJ project. Engagement car was in attendance at the Create Festival.	No update at present
8	Deliver 1 school based YEARS programme duplicating Homewood model possibly John Wallis	Targeting young driving age young people 17-24 identified as highest risk of KSI and casualties	Numbers attended of driving age and evaluation of thoughts and behaviours.	KFRS				Homewood School dates confirmed as 15th & 16th October. Feedback will be sought from previous attendees in order to promote to other schools.	All arranged and should take place subject to KFRS industrial action problems. Ff Mick Pitney at Ashford Fire Station is coordinating.	YEARS event held at Homewood School, excellent attendance and feedback from pupils.
9	Deliver 1 multi agency Restorative Justice event	Targeting drivers committing minor offences to give chance for awareness rather than enforcement	CSP profile highlights minor driving issues as causing KSI and casualties.	Kent Police				Precise details are currently being agreed. Ongoing.	Attempts are being made to secure date with KFRS to carry out an event on the Hythe Road.	RJ event carried out by PCSO's targeting drivers in Crundale, Charing, Godmersham, Park Farm and Hothfield.
10	Target a car showroom in Ashford to hold an event to raise road safety awareness.	New and experienced drivers potentially purchasing cars	Numbers attended and evaluation at the event.	KCC Wardens				Showrooms have been approached. Ashford Orbital Kia (Nov).	Women in Gear event organised at Kia car showroom, Ashford Orbital on 6th November - Ashford CSU will be attending. Meeting held to discuss plans.	Women in Gear event went ahead and was very successful. Audience figures were around 100-120 males and females. KCC Community Wardens had a joint stand with KCC Road Safety. Feedback was very positive.
11	School parking campaign to top 3 schools with parking issues	To reduce the risk of child casualties outside of schools from parents and road users inconsiderate parking.	Ongoing issues outside of school warrants an awareness and enforcement campaign over the year.	KCC				Parksafe has already ran in some schools and will continue to do so. Further schools will be chosen and process repeated.	Ongoing work.	Ongoing work and with KFRS working on Park Safe being revisited and rolled out to schools in a bespoke format.
12	Deliver 1 speed reduction day on Hythe road, Ashford A292	To reduce the number of KSI and casualties on this road	CSP profile highlights the A292 as a hotspot road for incidents	Kent Police				This can be removed from the plan as duplicates the Restorative Justice event planned in point 9.	Closed - see details in Q1 column.	Closed - see details in Q1 column.
13	Use mass messaging techniques to raise awareness amongst target groups of key road safety issues	Deliver a countywide programme of campaigns to raise road user awareness of key road safety issues (e.g. speed, drink drive, drug drive, mobile phones, seatbelts, 'be bright be seen' and motorcyclist safety), which will be present throughout Ashford.	Draft campaign plan developed, with a specific focus for most months of the year. Specific reach to road users in Kent is published and evaluation of success is captured through recall surveys for some activities (also available is recall of previous campaign periods)	KCC Road Safety				Number of events planned - Summer DD, Drug Drive and Think Bike.	Awaiting update	Completed via KFRS social network sites which has been backed up with further messages by partners. Mass messaging techniques helped to launch and make the Winter Drink Drive campaign at Mc Arthur Glen on the 1st December a huge success.
14	Provide Young Driver Education to 16-18 year old students	Young Driver Education offered to all Sixth Form schools and delivered to those who request it. Specifically deliver YDE to 4 schools in Ashford	Numbers dealt with and feedback from students and school staff	KCC Road Safety				Delivered to two schools in Ashford	Work ongoing.	Work ongoing as per annual campaigns.

15	Provide young driver / passenger safety education to 16-18 year old students	Offer the Speak Up Theatre in Education production to all sixth forms schools and respond to demand within the scope of the arranged tour - provide to at least 2 Ashford schools	Numbers dealt with and feedback from students and school staff	KCC Road Safety		Works in progress.	Speak Up was delivered for 3 years however following a review the initiative changed to TIE which focuses on Drug Driving. One school booked with two other school as tentative.	Work ongoing as per annual campaigns.
16	Provide advice to parents of young passengers on the correct choice and fitting of car seats	Arrange 1 Good Egg Car Seat Clinic in Ashford to provide advice to parents on selection and fitting of appropriate child car seats - identifying those fitted poorly, incorrect for the child or that are incompatible with the vehicle being used.	Number of checks carried out and production of summary of results	KCC Road Safety		1 clinic still to be arranged.	Awaiting update.	Work ongoing as per annual campaigns. Looking into setting up a clinic at McArthur Glen in Spring 2015.
17	Use primary school pupils as a conduit between the KCC Road Safety Team and the school community to promote key road safety messages.	Provide the Junior Road Safety Officer scheme to 6 primary schools in Ashford and encourage them to participate in the annual JRSO conference to identify key priorities and actions.	Number of schools participating in the scheme (Inc. pupil roll reach) and attending the Conference.	KCC Road Safety		This project is on target with 8 schools currently having the scheme in place.	This project is on target with 8 schools currently having the scheme in place.	Increased to 9 schools.
18	Promote key safety messages to child pedestrians and cyclists in an engaging and fun way	Deliver the Smart Brothers Road Show to primary schools (Key Stage 1+2) across the county and respond to Ashford schools who request it - delivering it to at least 4 schools	Number of schools participating (Inc. pupil numbers) and feedback from school staff	KCC Road Safety		Not in Ashford this academic year.	Closed - see details in Q1 column.	Closed - see details in Q1 column.
19	Illustrate the benefits of using hi-visibility clothing materials as a way of demonstrating how child pedestrians and cyclists can reduce their vulnerability, in an engaging and fun way	Deliver the B-Viz theatre show to primary schools (Key Stage 2) across the county and respond to Ashford schools who request it - delivering it to at least 4 schools	Number of schools participating (Inc. pupil numbers) and feedback from school staff	KCC Road Safety		This project is on target with 10 schools being visited.	Awaiting update.	Work ongoing as per annual campaigns with The Smart Brothers B-Viz show delivered to 10 schools in Ashford.
20	Encourage safer cycling amongst children by providing the skills to use the road network more safely	Make available the Bike ability child cyclist training scheme for primary schools (Key Stage 2) that request it	Number of pupils that participate	KCC Mobility and Safety		5 schools participated and engaged with 75 pupils who received training.	Awaiting update.	Awaiting update
21	Enhance pedestrian skills through the provision of practical pedestrian training	Deliver the Small Steps programme to primary schools (Key Stage 1) who respond to the offer	Number of pupils that participate	KCC Mobility and Safety		Awaiting update.	Awaiting update.	Awaiting update
22	Extend the uptake and introduce the use of active green travel in targeted primary schools	To increase road safety awareness alongside the co benefits of increased activity in primary school children and their extended families, decreased congestion and parking problems around school entrances and improved air quality by reducing motor vehicle use.	Survey data produced in schools and sent on line to the delivery partner (accessible by ABC), indicating increased active green travel, adjusted against standardised data, to avoid bias.	KM Charity group		Work in progress with a number of schools. Looking to incorporate further schools in due course.	Awaiting update.	Awaiting update



Tactical Delivery Plan for Violent Crime 2014/15

Action	Target	Evidence	Main Partner	Progress				Quarterly Reporting 1 Apr - 30 June 2014	Quarterly Reporting 1 Jul - 30 Sept 2014	Quarterly Reporting 1 Oct - 31 Dec 2014	Quarterly Reporting 1 Jan - 31 Mar 2015	
				Q 1	Q 2	Q 3	Q 4					
1	Continue to investigate implementation of drink banning orders and seeking provision of support from substance misuse service providers.	Informing and advising people on sensible drinking, promote responsible socialising and empower local communities to tackle alcohol related issues.	Quantative Feedback on perceptions of violent crime related to alcohol misuse before and after campaign. Reduction in criminal damage	Kent Police					On hold whilst awaiting outcome of new legislation due to concern raised with Force Headquarters.	No development at present.	Option no longer exists in new legislation. Action to be closed	Closed - see details in Q3 column.
2	Explore opportunities for safer socialising awards or similar in a minimum of 5 venues.	Identify a minimum of 5 venues and what is required to achieve the safer socialising award or similar.	Minimum of 5 venues identified and plan of action developed and implemented	AWPAC					10 venues have been identified. Accreditation has been passed. Process to obtain the Safer Socialising Award has commenced	Meeting arranged for September with key partners to plan implementation.	Meeting held with key organisations and works progressing.	
3	Carry out a minimum of 3 multi agency operations throughout the year within the night time economy. Such as Op Century.	To work in partnership to carry out minimum of 3 operations during the year.	Reduction in violent crime and increase in feeling of public safety	Kent Police					Ops to be scheduled for year. Failure to deliver planned operation in April due to changes in resource deployment.	Op Sentry multi agency Op carried out on the 2nd August, with others to be planned. Op Amazon is a police NTE Op which runs every Friday and Saturday	Multi agency Op carried out during the opening weekend of Cameo by Kent Police, ABC and AWPAC.	
4	Proactive multi agency support to major sporting events.	To work in partnership to effectively manage activities around major supporting events in the attempt to reduce violent crime	Reduction in violent crime	Kent Police					Countywide op planned "Op Curreen". Plans in place by partners of community safety to raise awareness and provide support identified by previous statistical reporting on spikes in Domestic Violence during major sporting events.	Various activities carried out in respect of Op Curreen (Football World Cup). No other relevant major sporting events since then.	Closed - see details in Q2 column.	
5	Establish a Town Net Radio scheme within Tenterden. Target of a minimum of 10 members by June 2014.	Increase use of Town Net Radios to improve exchange of information & prevent and deter crime in the Tenterden.	Reduction in Theft and Handling. Decrease in shoplifting offences.	AWPAC					Works in progress and relationships being developed with membership.	Awaiting update.	Aerial in situ at Tenterden and awaiting radio to be installed into the monitoring centre and working on building membership.	

6	Review and comment on the ABC's Licensing Act policy, in light of government changes to legislation.	Draft Policy for consultation by mid 2014. All regulatory authorities respond to consultation.	Numbers attending. Reduction in violent crime associated with NTE	ABC - Licensing Service		Consultation currently underway.	Consultation closed. Policy going to ABC's cabinet in September for approval. Discussion with Police on EMRO.	Policy has been agreed by cabinet and goes forward to full Coucil 11th December for approval.	
7	Coordinate a delivery of safety advice to a minimum of 6 educational establishments.	Educational visits to 6 secondary schools	Number of schools/pupils engaged with. Reduction in youth on youth crime	KCC Wardens		Close working relationships have been established with Homewood school and regular engagement with students on safety topics carried out. Visits to be arranged for 5 other secondary schools.	3 x delivery of internet safety CEOP to year 11 sixth formers and 4 x presentations of Life after Homewood scheduled for 30th March 2015. Looking at opportunity for presentations at North School and Towers School.	Youth on Youth presentations arranged at North and Towers Schools for early new year. Additional CEOP trainign carried out at Homewood for year 7 pupils. A small number of 121s done on CEOP for vulnerable females by KCC Wardens	
8	Incorporate education on violent crime in workshops in safety in Action.	Raise awareness about violent crime amongst approx. 500 youths	Audit of students reached publication of statistics in press release for further awareness	Communit y Safety Services		Intentions were to include element of violent crime in ASB workshop however it was decided by workshop lead that it wasn't possible to incorporate as messages would be muddled.	Closed - see details in Q1 column.	Closed - see details in Q1 column.	Closed - see details in Q1 column.
	Delivery of 3 community engagement days, focusing on priority wards.	Partners to engage with the community to assess & review violent crime issues.	Audit of residents reached publication of statistics in press release for further awareness	Kent Police		Community engagement day held in Victoria Park. Further event planned for Create Festival in July which will provide opportunity to engage with approximately 5000 people.	Opportunity taken to engage with the community at the Create Festival following the Victoria Park engagement day. Attendance by PCSO and at adhoc fetes. Other community engagement events to be planned prior to the end of the financial year.	No further locations identified but will look at delivering another in the nex quarter.	
9	Competition to youth services to hold youth activity in a unit at the county square.	To employ youth service to engage with young people during school holiday periods	To reduce the youth on youth violent crime reduction rates.	Communit y Safety Services		No action taken at present	No action taken at present	CSU in liaison with Police to look at requirements and develop a brief, then circulate to youth workers during next quarter.	
10	All new DPS to benefit from joint visits.	All new DPS's to be visited within the first two months	To build positive relationships	ABC - Licensing Service		All visits completed within target limits	Ongoing work and all new DPS visited jointly by Police and ABC Licensing Officer within target period	Ongoing work and all new DPS visited jointly by Police and ABC Licensing Officer within target period	



Tactical Delivery Plan for Acquisitive Crime 2014/15

Action	Target	Evidence	Main Partner	Progress				Quarterly Reporting 1 Apr - 30 June 2014	Quarterly Reporting 1 Jul - 30 Sept 2014	Quarterly Reporting 1 Oct - 31 Dec 2014	Quarterly Reporting 1 Jan - 31 Mar 2015
				Q 1	Q 2	Q 3	Q 4				
1 Develop "Rapid Response" roadshows for the areas experiencing high levels of acquisitive crime, to raise awareness & provide practical advice	Roadshow to be visible within 7 days of the area being identified. Reduction in acquisitive crimes in the area.	Qualitative feedback & reduction in theft and handling offences in target areas.	KCC Wardens	Yellow	Yellow	Green	Yellow	Carried out in Wye when increase of shoplifting was identified at local retail business. To deliver to other locations when necessary.	Further work in Wye carried out and advice given to display of goods in shop. Supportive work by Wardens and Police given to management of Tesco at Park Farm to try and reduce their levels of shop lifting.	Visit made to Court Wurtin shops by KCC Community Wardens on 28/11/2014. Good advice provided. Shoplifting appears to have decreased in Wye, Park Farm and Court Wurtin following Warden engagement.	
2 Prioritising recent burglary and shoplifting prison releases for IOM programme	Increase in offenders involved in IOM & subsequent reduction in reoffending rate	Reduction in reoffending rates	Kent Probation	Red	Red	Red	Red	Awaiting update	Awaiting update.	Awaiting update.	
3 Use of Multi-agency clean sweeps in areas to raise awareness & reduce acquisitive crimes in areas	Reduction in acquisitive crimes in the area. Raised awareness	Qualitative feedback & reduction in theft and handling offences in target areas.	ABC - Community Safety Service	Yellow	Yellow	Yellow	Yellow	Cleansweeps delivered in Kennington, Wye and Hothfield. Further operations to be planned later in year.	Cleansweep delivered in Singleton and several locations in South Ashford on 28th August. Further operations to be planned before the end of March	Discussions being held re dates and next venue which is likely to be held in February.	
4 Smart water & pedal cycle marking campaigns focussing on bicycles, skateboards & target crime hotspots, including Firefit to raise interest if available and promote use of property marking website	Reduce thefts & increase % of items returned to owners. Increase in Community groups running property marking events. Increase of % of items returned to owners.	Reduction in theft and handling & increase in stolen property returned to owners	KCC Wardens	Yellow	Yellow	Yellow	Yellow	Wardens delivering local initiatives and currently developing a security pack for repeat victims of burglary, funding has been secured from various partners	Leaflet drops carried out in areas of concern. Cycle marking held in many locations including schools. Seeking funding for Smart Water kits.	Funding obtained for Smartwater kits and programme being rolled out by KCC Wardens	

5	Utilise an empty shop premises for training to educate shop assistants/keepers to learn best practices for keeping shoplifters out of their stores. Develop Training brief (retail crime best practice target guide) for targeting both new and existing staff to make them aware of their responsibilities, assistance available and the law. Promote Operation Aladdin	Reduction in theft and handling	Increase in reports to APAC of incidents. Reduction theft and handling	Kent Police		AWPAC will be organising working group in June which will include Police, ABC's monitoring centre and retail security.	Awaiting date for first meeting with AWPAC. Police and ABC's CSU/monitoring centre are keen to be involved.	Initiative delivered 17 - 25 November which included training on radio use, how to deter shoplifter and recognising counterfeit bank notes - well attended and evaluation of effectiveness of training to be undertaken. General feedback of the event was positive.
6	Expand and Improve Ashford Partnership Against Crime (APAC) membership to set up and establish membership in Tenterden and other locations	Increase use of Town Net Radios, improve exchange of information & images to prevent & deter crime by challenging potential offenders, increase in exclusion notices and reduction in theft and handling. Expand Shopwatch to other areas within the Borough. Set up and establish Tenterden Shop Watch, Increase membership to cover the footprint	Increased APAC Membership and expand to new locations	AWPAC		Have gained 1 member and 2 potential members in Ashford. Works progressing in Tenterden and discussions being held with Town Council.	Awaiting update.	Works ongoing with Tenterden Radio being installed in to the monitoring centre early in the new year.
7	Improve Retail imposed banning orders - develop the "Ban from one , Banned from all" approach	To identify the top 10 sites to work in partnership to implement banning orders working across stores. Photos of banned individuals shared with monitoring centres. Partnership approach to enforced banning orders.	Number of banning orders in effect across top 10 outlets. reduction in theft and handling offences	AWPAC		Work progressing and identifying supporting statistics. A number of key premises have been identified and working with these retail outlets. Number of reports have seen improvement since the rebranding of the scheme.	Awaiting update.	Working on a new target file system as there have been high level of staff changes in both management and security. Banning orders are being issued as per protocol.
8	Improve joined up working and sharing intelligence with various programmes i.e. JFMP and ASF	Improve sharing of information with various agencies to identify repeat offenders or deliver early intervention to new offenders	Regular sharing of information. Reduction in repeat offending	ABC - Community Safety Services		Secure email obtained and due to sign the Kent & Medway Information Sharing Agreement.	Continuing to develop partnership working arrangements to encourage and enable the sharing of appropriate and relevant information that meets legislative requirements. ASF Project Manager attends JFMP	Running monthly and working well.
9	Develop presentation package for delivery to Parishes/forums advising of Community Safety activity	Development and delivery of presentation	Number of presentations delivered	KCC Wardens		Presentation development. 10 deliveries of the presentation have been carried out at various events in the areas patrolled by Community Wardens.	Regular updates are given when an opportunity arises to push the activities carried out by the community safety partners.	Advice on Community Safety activities given out regularly at local events, fetes and farmers markets.

10	Bike Card initiative creation of a credit card sized document for recording bike details such as: serial number, make, model and colour	To roll out to stores selling bikes and provide to purchasers/customers	Number of stores supporting the initiative	ABC				No action taken at present	No action taken at present.	Research carried out to identify various models that are currently in existence which include a free online registration. Update to be provided in 4th quarter.	
11	To purchase and provide Motion Detectors that light up to act as deterrent to criminals to reassure repeat victims	To distribute among repeat victims to provide reassurance	Number distributed and increase feeling of security/safety via (KCVS) Kent Crime Victimisation Support	KCC Wardens				No action taken at present	Warning/security signs issued to properties to deter criminals from targeting. Shed alarms issued where appropriate.	Funding being applied for to further promote shed/garage security. Events and publicity will be undertaken soonest.	
12	Produce information leaflet advising of various products and services that could assist with home security and safety	Distribute leaflet to high risk areas and repeat victims	Number of leaflets distributed Reduction in crime to location.	KCC Wardens				Available literature and advise being distributed to communities when necessary. Security pack is being developed for repeat victims of burglary, funding has been secured from various partners.	Many areas visited with leaflet drops and community advice given out where necessary. Wardens available to provide security advice at community functions.	Latest "Protect against burglary" leaflet given out to Ashford Team Community Wardens on 26 November 2014. These will be distributed as required.	



Tactical Delivery Plan for Rural Crime 2014/15

Action	Target	Evidence	Main Partner	Progress				Quarterly Reporting 1 Apr - 30 June 2014	Quarterly Reporting 1 Jul - 30 Sept 2014	Quarterly Reporting 1 Oct - 31 Dec 2014	Quarterly Reporting 1 Jan - 31 Mar 2015
				Q 1	Q 2	Q 3	Q 4				
1 Hold intelligence collecting meetings every 6 weeks	Meetings held every 6 weeks and information to result in reduction in rural crime	Reduction in rural crime figures	Kent Police					These meetings take place on an informal basis and will continue to do so. There is a need to pull together information from various sources in order to collate accurate data in the rural areas. Feedback is required for elected members - look into the possibility of resurrecting the Rural Feedback Forum.	This meeting process is best combined with the previous Rural Crime Forum type meetings to which local councillors and partners are invited, still remains in the planning stage at present.	Meeting arranged for 8th December for an East Kent Rural Action/Intel meeting process with partners. It is currently in the planning phase with the NFU who are taking the lead with KCC Community Warden support	
2 Publicity campaign to inform the public and agencies on problems and solutions around illegal fly-tipping	Improved reporting of incidents. Improved evidence gathering from partner agencies.	Reduction in fly-tipping	ABC - Health, Parking and Community Safety					Leaflets have been distributed from ABC and the website updated accordingly. Covert operations are to be held in hotspot areas. Information collected by ABC regarding hotspots and suspicious vehicles to be shared between Kent Police and ABC. This information can then be fed into Predpol long term.	Awaiting update.	Discussions held on further delivery of this action. Next meeting scheduled for January.	
3 Multi-agency fly-tipping enforcement campaigns and use of overt CCTV in fly-tipping hot spots	3 multi-agency events targeting fly-tipping hot spots, including in rural cleansweeps. Use of overt CCTV to reduce offending	Reduction in fly-tipping	ABC - Health, Parking and Community Safety					Keep Kent Clean' to be contacted and asked to come on board.	Awaiting update.	ABC officers are working with KCC to develop a more robust system for managing flytipping with processes in place to undertake enforcement and prosecutions.	

4	Run Operation Innovate which involves the local community reporting suspicious vehicle movements to patrolling Police Officers	Run two operations involving Kent Police, HMRC and KCC Wardens	Delivery of a minimum of two operations and increase in intel being provided and shared	Kent Police		Operation Nonagon is running and will continue to do so - Innovate to run shortly. Road checks are happening and Op Parody has been run in the Marsh area regarding Hare coursing.	Operation Nonagon continues - last deployment was 23/07/14 and ran in partnership with Swale District. Operation Lupin has been run during this period which concentrated on BOTD 23/06/14 to 05/08/14 - significant reduction in BOTDs in the rural areas, increased rural visibility and crime prevention	Op Nonagan continues to run regularly. Also regular Op Innovates (working with farmers/landowners to target rural criminality). Recent local operations aimed targeting the rural area/rural offenders has shown positive results in reducing rural crime in excess of 55%	
5	Use of Smart Water and other property marking devices to protect property	Use of property marking devices in multi-agency events, at public events, farmer's markets, etc.	Reduction in acquisitive crime in rural areas	KCC Wardens		Ongoing. Planned attendance at Tentertainment and the Create Festival. KCC Wardens to target further summer activities and attend in partnership with Kent Police.	Smart Water kits issued at community events and on request from residents by visits to properties. Additional funding being sought. Working with Police and PCSO's in areas. During course of Op lupin - significant number of interactions with the public re property marking advice and in excess of 200 (secure) property labels were distributed by Police & KCC Wardens in rural locations.	Funding has been obtained from the CSP for Smartwater kits and events are in the planning stages. More kits will be purchased once additional funding is secured from KCC members.	



Tactical Delivery Plan for Anti Social Behaviour 2014/15

Action	Target	Evidence	Main Partner	Progress				Quarterly Reporting 1 Apr - 30 June 2014	Quarterly Reporting 1 Jul - 30 Sept 2014	Quarterly Reporting 1 Oct - 31 Dec 2014	Quarterly Reporting 1 Jan - 31 Mar 2015
				Q 1	Q 2	Q 3	Q 4				
1 Deliver 2 Youth Engagement Around Road Safety (YEARS) programmes aimed at 16-24 year olds	Target young people with motoring offences, those with concern around motoring-related activity and those identified as risk takers	Numbers targeted and reached	KFRS					No action taken at present	Planned to take place at Tenterden fire station in association with Homewood School in October.	One event held at Homewood School in October with a further event being planned for Ashford in the 4th quarter.	
2 Ensure victims of ASB receive appropriate support, including early identification of vulnerable & repeat victims via continuation of Operation Claxon , a community Trigger approach on a one monthly basis of any high risk area in the Borough , also specialist training on RAM's.	Increase in satisfaction of the those who report ASB with overall service provided by Kent Police.	Increase in satisfaction with the way police deal with ASB	Kent Police					Ongoing work which will involve refresher training to all officers following the Force restructure in June 2014.	All PCSO's are now line managed in the CSU which has allowed for consistency of ASB management. Op Claxon continues to be effective and any development needs re LDPT officers following the Force restructure are being identified and addressed on an individual basis.	As per Q2 update.	
3 Early identification & assessment of perpetrators to ensure appropriate actions are taken; including referral to multi agency groups which manage perpetrators, use of appropriate sanctions such as ASBO's & closure orders	Reduction in the number of anti-social behaviour incidents (including arson) in Victoria & Stanhope wards and town centre	Reduction in ASB and Criminal damage	Kent Police					Ongoing work. Actions taken so far have resulted in recent conviction of repeat high risk offender.	Monitoring of the only active ASBO is ongoing and breach of ASBO and other offences has lead to 4 month custodial sentence due to be heard in September. The JFMP meeting has been revamped and forms part of the multiagency ASB panel which also incorporates troubled families reviews. JFMP are currently working with 16 individuals and managing 2 ABA's.	As per Q2 update. One active ASBO and JFMP currently have 20 active cases. Dispersal zones and pred pol activity regularly implemented/carried out in relevant areas.	
4 Provision of Joint Family Management Programme to provide intensive support to parents, where anti-social behaviour & youth crimes are evident. Work closely with children's services & other partners to join up work around the "Supporting Families"	To reduce ASB committed by young persons on the programme to reduce first time entrants. Best use and explore - analysis and profiling of young people to identify needs	Reduction in ASB and criminal damage	Kent Police					Currently 8 young people managed through JFMP. New JFMP officer introducing different approach to delivery.	As above update. Currently have 16 individuals/families being worked with and the Troubled Families Officer will imminently be working from the police/CSU office which will improve joint working practices.	As above, JFMP currently with 20 families. TF officer now regularly works from police CSU office and Kent Police TF resource also works 2 days per week from Ashford. There is also a monthly multi agency integrated TF/ASB panel meeting.	


5	KCC Wardens to engage with the local community at the earliest opportunity to assess & review impact of ASB upon a community.	Reduction in total number of anti-social behaviour incidents	Reduction in ASB and criminal damage	KCC Wardens		Ongoing on a daily basis with wardens dealing with low level matters but highlighting any higher risk ASB concerns to ASB officers.	Wardens engaging daily within their areas dealing with and following up ASB incidents. They are attending youth events to educate on ASB.	Low level ASB is being dealt with by the Community Wardens once those involved are identified. Presentations/words of advice are given when required.	
6	Pilot Community Resolution Panels in Stanhope and Victoria wards, using a restorative approach to tackling low level anti-social behaviour & neighbour disputes	Increase in satisfaction of those who report ASB with overall service provided by Kent Police	Increase in satisfaction with the way police deal with ASB	ABC - Community Safety Service		Initial meeting held, with work progressing.	No further developments to report back at this stage.	Funding proposal submitted to the PCC for the £11k - awaiting decision.	
7	Attend all repeat victim ASB calls	To attend all repeat victim ASB calls	Reduction in ASB and Criminal damage	Kent Police		Op Claxon is deployed to all Police ASB repeat victim calls	Ongoing as per details in Q1 column.	As per previous updates	
8	Multi agency operations targeting anti-social behaviour hotspots, including a robust enforcement of the DPPO and hotspots in the night time economy.	Reduction in the number of anti-social behaviour incidents in target areas	Reduction in ASB and Criminal damage	Kent Police		Op Sentry and Op Cleansweep delivered in Kennington, Wye & Hothfield. Further Ops to be organised which include the night time economy	Cleansweep delivered in Singleton and several locations in South Ashford on 28th August. Further operations to be planned before the end of March 2015.	Further Op to be planned (location to be confirmed) prior to the end of the financial year. Regular Force and local multi agency pre-pol days of activity take place with good representation from a variety of agencies in the District.	
9	To hold school surgeries giving young people the opportunity to discuss crime concerns.	To raise awareness in at least 4 schools of ASB & its effects. To learn of emerging patterns affecting young people	Audit of students reached and qualitative feedback to CSP	ABC Community Safety Service		No action taken at present	No action taken at present.	Discussions being held to establish if schools that PCSO's support and would welcome a surgery being held during Jan - Mar.	
#	6 monthly EVA's in Stanhope and Victoria wards to determine multi agency response to documents issues.	Improvement in environment in Stanhope and Victoria Wards	Reduction in ASB and Criminal damage	ABC Community Safety Service		Community wardens regularly undertake patrols with police officers in the Stanhope ward and report any matters to appropriate agencies.	Patrols ongoing as per details in Q1 column. Planned multi agency EVA's to be arranged for Victoria and Stanhope Wards.	Establishing when Ward Walks are held to try and build the EVA's in with these.	
#	Social Housing providers to engage in noise related issues and to take enforcement action when appropriate.	Reduction in noise hotspots associated with residents of Social Housing	Reduction in noise related ASB	ABC - Community & Housing		Awaiting update	Awaiting update.	Work progressing with all working to tackle noise related issues and enforcement action when necessary.	
#	Provide Graffiti cleaning kits to community groups and aim to increase the number of community groups accessing graffiti removal kits and the number of clean ups.	Increase Local Communities' role in removing environmental crime	Quantitative feedback on number of kits & groups	ABC - Street Scene & Open Spaces		Awaiting update	TCAT are now trained to use Grimebuster. Kits still be organised for the communities.	Awaiting update	
#	Action around noise - Actively sharing and monitoring information with partner agencies.	Improve sharing practices between agencies to highlight repeat offenders/locations	Reduction in noise related ASB incidents	Kent Police		Reporting & recording methods being investigated	A daily report of noise incidents reported to the police is now shared with ABC.	As per previous update	
#	Deliver 1 x 5 week Pathway course	Provide work skills to 16 - 24 year old NEETS, such as team work, problem solving & communication & health and safety qualification	Numbers targeted and reached. Reduction in KSI	KFRS		No action taken at present	No action taken at present.	Discussions are being held to deliver Pathway Course in 4th Quarter.	

#	Fire fit engagement	To provide fire fit to up to 800 secondary school children.	Number of secondary School children engaged with KFRS	KFRS		Awaiting update	Awaiting update.	Fire fit formed part of the element of the YEARS programme delivered at Homewood School and engaged with approximately 300 pupils. There have been developments with the request of Fire Fit at events which requires making a bid for the service and providing evidence of match funding in resources or payment for the service.	
#	Engagement at Community Forums & PACT meetings to be attended by PCSO's & other agencies as appropriate.	To collate meeting schedules and arrange to attend regularly.	Number of meetings attended and feedback.	PCSO's		Awaiting update	Parish council meetings are either attended or updated by PCSO's or Community Wardens.	As per previous update. There is also currently a review of the methods of Community Engagement in the District.	
#	Develop links with Mental Health & identify resources needed to commission appropriate Services.	Establish contacts and build working relationships.	Feedback of progress.	Kent Police		CSU Sergeant assigned as the Single Point of Contact (SPOC) for Ashford District and is currently building contacts and relationships with local and Kent based Mental Health Services.	This action is ongoing. Good contacts have been made in mental health services and now CSU sergeant now regularly attends professional meetings to ensure and appropriate intervention where appropriate.	As per previous update. Main focus is around demand reduction with repeat callers.	
#	Establish Community Trigger process	Review current processes to ensure meet requirements of the Community Trigger process.	To be implemented by 1st October 2014	ABC - Community Safety Services		Early stages of review and implementation - aim to have full practice in place by October 2014	Works progressing in order to meet launch dealing in October. Report going to ABC's September cabinet with proposals.	Prepared and ready to go!	
#	Generic Enforcement roll out. Litter enforcement pilot within Ashford and vicinity	Establish and implement roll out of generic enforcement within the Ashford borough.	To be implemented by 31st March 2015	ABC - Health, Parking and Community Safety Services		Launch date for the new litter initiative was Saturday 14th June. Education will be delivered first with enforcement taking place at a later date.	Sir Litternot has now been launched. A number promotional events in a number of locations throughout the Ashford Borough have been carried out including the Create Festival and Stanhope Community Day.	Being put on hold but to consider for next years plan, continuing with publicity for Sirlitternot	



Tactical Delivery Plan for Domestic Abuse 2014/15

Action	Target	Evidence	Main Partner	Progress				Quarterly Reporting 1 Apr - 30 June 2014	Quarterly Reporting 1 Jul - 30 Sept 2014	Quarterly Reporting 1 Oct - 31 Dec 2014	Quarterly Reporting 1 Jan - 31 Mar 2015
				Q1	Q2	Q3	Q4				
1 To produce a program exploring healthy relationships within secondary schools.	To engage with year 9 and 10 students where possible.	Audit of students reached, publication of statistics in press release to further raise awareness.	Domestic Abuse Forum					Awaiting update	ADAF funding Rising Sun to undertake "Love Shouldn't Hurt" campaign. Only 1 school has not yet had this. KIAS also involved in promoting Young Health Minds but we need stats to clearly identify what is needed. Homewood club could be starting point.	Awaiting update.	
2 Housing and benefit advice to continue to be offered at the One Stop Shop.	Regular attendance at One Stop Shop and evidence of providing value for money.	Qualitative feedback research amongst One Stop Shop staff.	ABC - Community & Housing					Ongoing regular attendance by Housing officers, however, risk of stopping in September.	Housing Officer funded by Children Centre has attended but only during secondment period.	Plans in place to have officer attend weekly	
3 Dash and IDVA awareness training for Neighbourhood Police Officers.	All PC's to visit the One Stop Shop.	Track number of officers trained. Increase in average monthly visit to One Stop Shop.	Domestic Abuse Forum					Awaiting update	Two regular PCSO's attend.	Regular attendance by officers.	
4 Continued training for partners (KCC Wardens, Fire Officers, etc) paying visits on domestic abuse.	Run a series of training events to raise awareness to help signpost victims to One Stop Shop, etc.	Audit of staff reached, publication of statistics in press release to further raise awareness. Increase in average monthly visits to One Stop Shop.	ABC - Community Safety Services					Ongoing and to date all Community Wardens have attended training.	Awareness event gave opportunity to engage with a large number of people. OSS monthly figures continue to rise.	Discussions to be held on future training requirements and delivery.	
5 Seek funding to support Independent Domestic Violence Advisors and gain commitment for future funding.	To obtain funding for IDVA post through external funding and partner agencies.	Secure funding and confirm future funding commitment.	ABC - Community Safety Services					Action taken and letters sent to all schools and housing providers. £11,000 of funding secured from partners.	Ongoing discussions with ABC re 3 year funding for IDVA and other funders sought to protect sustainability.	Funding obtained	
6 More advertising of Domestic Abuse services surrounding the World Cup.	CSP to encourage and support any forum campaign that may be held at any time.	Qualitative feedback research amongst forum members.	ABC - Community Safety Services					Action taken to raise awareness which includes posters being displayed in public places including shops, pubs, surgeries and Gateway. Information being promoted via ABC Twitter.	Community Safety Partners were all active in this with the CSP funding literature/posters that were displayed in key locations to raise awareness and provide contact details.	Statistics show that Ashford experienced the largest reduction in Kent for reports of DA over the world cup period	
7 Partners to provide continued support to the DA forum over the coming year.	Regular attendance by appropriate partner agencies at the DA forum. ABC housing staff to commit to training possibilities.	Increase in average monthly visits to One Stop Shop.	All Partners					Regular attendance by partners including Kent Police, Community Wardens and Ashford Borough Council Housing Officers. Services promoted by all partners.	Ongoing as per details in Q1 column.	As per previous update.	
8 Public awareness day to be held to celebrate the 4th anniversary of the One Stop Shop.	Joint event to be held in a central location.	Increase in average monthly visits to One Stop Shop.	Domestic Abuse Forum					Awaiting update	ADAF in favour if OSS Co-ordinator post is funded. Otherwise OSS cannot cope with increase in numbers.	Awaiting update.	

9 Replacement source sought for the freedom training co-ordinator post.	To create a central point for all referalls.	Track number of individuals trained. Increase in average monthly visits to One Stop Shop.	Domestic Abuse Forum		Awaiting update	OSS Co-ordinator would undertaken this role.	Interviews being held in December.	
---	--	---	----------------------	---	-----------------	--	------------------------------------	--



Tactical Delivery Plan for Substance Misuse 2014/15

Action	Target	Evidence	Main Partner	Progress				Quarterly Reporting 1 Apr - 30 June 2014	Quarterly Reporting 1 Jul - 30 Sept 2014	Quarterly Reporting 1 Oct - 31 Dec 2014	Quarterly Reporting 1 Jan - 31 Mar 2015
				Q 1	Q 2	Q 3	Q 4				
1 Multi agency awareness day centred around the Stour Centre (undercroft) and skate park.	Raise awareness about drug abuse & sources of advice & assistance raised amongst youths	Audit of students engaged with publication of statistics in press release for further awareness	ABC - Community Safety Services,					No action taken at present	No action taken at present.	Discussions to be held with CSU partners	
2 Deliver awareness briefings to include caffeine and new psychoactive substances to youth services, volunteers working in the community & professionals and parents through schools parent evening. Turning Point to deliver presentation on their services.	Raise awareness about substance misuse raised amongst Parents, Teachers, Flo workers and Secondary schools.	Qualitative feedback research amongst attendees	Turning Point					Awaiting update	Turning Point's understanding is that KCA YPS will be delivering drug awareness on caffeine and psychoactive substances in secondary schools and that Turning Point agreed to provide presentation on their services to parents and professions at the same events.	Awaiting update	
3 Develop the links between the Drugs Liaison Officer and Housing as a standard to roll out to Social Housing providers	Issues involving substance misuse to be notified to police in advance for a coordinated response	Improve links between agencies to assist clients maintaining their tenancies	ABC - Community & Housing					Working relationships between ABC Housing Area Managers and Kent Police Drugs Liaison Officer have been established and are continuing to work together in a coordinated approach to tackling issues and carrying out joint visits where appropriate.	No further inputs have been carried out due to long term sickness.	Police have undertaken a review of the DLO's and Ashford is now sharing a DLO with other areas. Discussions to be held with partners on delivery of this action.	
4 Safety in Action fortnight briefing to approx. 1000 year 6 children	Awareness about substance misuse & sources raised amongst approx. 500 youths	Audit of students reached publication of statistics in press release for further awareness	ABC - Community Safety Services					Substance misuse workshop being delivered 16th - 27th June 2014	Debrief session to be organised. Plans to be discussed for next year's event.	Closed	
5 Involvement of specialist staff (e.g. KCA & Turning Point) in the IOM & TF (Supporting Families) initiative	Ensure specialist drug agencies are aware of individuals and families signed up to signed up to the two initiatives	Increase number of people entering treatment services	Turning Point / KCA					Joint working with Turning Point and IOM when individuals are identified by IOM	Ongoing work as per details in Q1 column.	Closed	

6	Share drug paraphernalia information found with partner agencies.	KDAAT, Kent Police, KCA & Turning Point regularly updated on drug paraphernalia finds by contractors, KCC Wardens, Dog Wardens, Community Enforcement Officers, Waste and Green Team contractors, Turning Point to make available outreach service via their Roving Response Vehicle	Qualitative feedback from Partners to CSP	ABC - Community Safety Service		Ongoing work - information being shared but working on improving links and reporting.	Turning Point have provided outreach in areas where drug paraphernalia has been reported through CSU partners. Recent areas of focus have been Memorial Gardens and Mill Court.	Information being shared regularly.	
7	Improve the links between the substance misuse partners and the Housing agencies	Regular contact, resulting in a multi agency approach to substance misuse related tenancy issues. Presentation to assist knowledge of drug and paraphernalia for partners	Increase in number of people entering treatment services. Reduction in the number of deaths through substance misuse.	ABC - Community & Housing		Ongoing work with links improving constantly	Turning Point presentation to Housing still outstanding, possibiity of delivering this in September.	Awaiting update	
8	Run drug awareness events in schools to include psycho-active substance information	Operation Caddy & Risk It run in secondary schools/higher education establishments	Audit of students reached publication of statistics in press release for further awareness	Kent Police		Awareness sessions have been carried out at secondary schools (Towers, Highworth, Norton Knatchbull & Homewood). Drug dogs used when available.	No further inputs have been carried out due to long term sickness.	Educational inputs are no longer carried out by Kent Police as there has been a HQ strategic decision that this should be the responsibility of the schools (and possibly KCA)	
9	Run drug enforcement operations, including licensing controls and other enforcement measures to ensure that Licensed Premises do not encourage binge drinking, or sell to those underage or allow drug dealing. New DPS licensing visits to incorporate drug swab analysis.	12 licensed premises to be drug swabbed and action plans implemented as necessary. Drug swab of premises to be included in all 'New Landlord first visit' by licencing.	Details premises drug swabbed and outcomes reported. Evidence of action plans developed and implemented.	Kent Police		Enforcement operations to be organised. Actions to be undertaken as part of the World Cup plans.	ABC and Police licensing officers carry out joint visits to any new DPS. There is a daily review of incidents linked to licensed premises with any necessary interventions made. Drug swabs will be incorporated into NTE ops such as Op Sentry.	Review of POW carried out and further activity in hand. Weekly police NTE patrols and licensing visits, incorporating drugs searches. Regular multi agency work to address problem premises.	

Community Safety Fund Monitoring form

Name of **organisation** and person completing form

Ashford Borough Council – Alison Tickle

Contact email and telephone number

Alison.tickle@ashford.gov.uk

Funding requested from Police and Crime Commissioner for period
 [October-April *delete as necessary]

£14952.59

Project/service	Overview	Cost	PCP & CSP priority	Expected outcome/achieved outcome
Race Hate reporting telephone line	The telephone line provides an independent reporting line for anyone who has experienced hate crime (sexual, homophobic or race related). The call handler will pass the information received onto the appropriate agency.	£240	PCP Priority: Cutting Crime and Catching Criminals CSP Priority: Prevent crime, anti-social behaviour and reduce victimisation and offending	Support for anyone who is experiencing hate crime.

Safety In Action	Fortnight of workshops to approx. 1200 year 6 pupils of the Ashford Borough who would be making the transition from primary to secondary school. The event covers subjects on road safety, water safety, school absence, anti social behaviour, drugs and alcohol, internet safety, personal safety, coach safety, rail safety, stranger danger and peer pressure. Plus funding to assist schools who struggle to fund the event or children who are not in a position to pay.	£500	PCP Priority: Tackling the Root Causes of Crime and Anti-social Behaviour CSP Priority: Road Safety, Antisocial Behaviour, Substance Misuse	Raising awareness of dangerous situations and consequences, education on the harm of substance misuse and the knock-on effects associated with these, increased understanding of how actions affect others. Reduction in anti-social behaviour, accidents and involvement of misuse of substances. Event delivered to approx. 1050 year 6 pupils, excellent feedback received from, pupils, teachers and partner agencies.
Domestic Abuse awareness during World Cup	Publicity for raising awareness about Domestic Abuse and how to report.	£365	PCP Priority: Protecting the Public from Serious Harm and Putting Victims and Witnesses First CSP Priority: Violent Crime and Domestic Abuse	Raising awareness and who to contact to report. Ashford reversed the county trend and didn't see an increase in reported domestic abuse over this period.

Kent People's Trust	Contribution to their budget to assist with the match funding for requests to support projects/initiatives to tackle anti-social behaviour and crime in Kent.	£500	PCP Priority: Tackling the Root Causes of Crime and Anti-social Behaviour CSP Priority: Anti-social Behaviour	To assist with helping other's bid for funds to assist with projects to educate about or reduce/prevent crime and disorder.
Crime Prevention Bike Marking Initiative	To raise awareness on securing of property and preventing the crime taking place.	£470	PCP Priority: Cutting Crime and Catching Criminals CSP Priority: Acquisitive Crime	Despite the preventative work that is being carried out, Ashford is still experiencing an increase in bike thefts.
Smart Water Property Marking Initiative	To provide support to repeat victims of burglaries of dwellings and non dwellings and also to raise awareness in the hope to prevent theft of goods.	£500	PCP Priority: Cutting Crime and Catching Criminals / Putting Victims and Witnesses First CSP Priority: Acquisitive Crime	Burglary dwelling figures have decreased, however, Ashford has seen an increase in burglary other than dwelling.
Lights for Wheelchairs	To help disabled and elderly people more visible and safer when out and about on the pavements and roads, especially in the darker months. Other walking aids such as frames and walking sticks have fluorescent strips and flashing armbands. This project is delivered in	£500	PCP Priority: Protecting the Public from Serious Harm CSP Priority: Road Safety	Reduction in number of accidents involving elderly or disabled people using the roads and pavements. Awaiting feedback.

	partnership with KCC Community Wardens, Tenterden Disabled Action Day Centre and Elder Care Day Centre.			
Support at Sk8side	<p>Support for eight individuals identified via the Ashford Supporting Families. Programme for six months with 121 support with key workers and personalised programmed. Sessions will be recorded and monitoring reports</p> <p>submitted bi-monthly with final evaluations reports with participants and details presented to ASF board.</p>	£3,536	<p>PCP Priority: Tackling the Root Causes of Crime and Anti-social Behaviour plus Reducing Reoffending</p> <p>CSP Priority: Acquisitive Crime, Anti-social Behaviour</p>	<p>Decrease in exclusions and absences among school attendees; Reduction in ASB and Crime, Increase in work placements.</p> <p>Ashford has seen a reduction in absences with individuals on the "watch list" and ASB figures have decreased significantly in the borough.</p>
Crime Reduction Equipment	Working with partners to deliver against the CSP and PCP for 2014/15. Aims to reduce victim based crime, raise awareness and deter public fear of crime. Crime prevention items to be distributed at community engagement events and Cleansweep operations.	£475	<p>PCP Priority: Tackling the Root Causes of Crime and Anti-social Behaviour plus Ensuring Visible Community Policing is at the heart of Kent's Policing Model</p> <p>CSP Priority: Acquisitive Crime, Anti Social Behaviour</p>	<p>To reduce/prevent crime in the Ashford Borough.</p> <p>Used with cleansweeps carried out in: May 2014 (Wye), August 2014 (Singleton, Brookfield/Court Wurtin).</p> <p>Reduction in burglary</p>

				<p>dwelling.</p>
<p>Intoxic8</p>	<p>Intoxic8 is a one day intervention for secondary school pupils which seeks to help young people understand the impact of living responsible healthy lifestyles. The curriculum areas include substance misuse, relationships, sex education, aspirations, and self esteem (including self harm). Compliments the PSHE curriculum requirements.</p>	<p>£2,000</p>	<p>PCP Priority: Tackling the Root Causes of Crime and Anti-social Behaviour</p> <p>CSP Priority: Substance Misuse, Violent Crime, Domestic Abuse, Anti-social Behaviour</p>	<p>Reduction in number of young people participating in substance misuse, reduction in anti social behaviour, reduction in domestic violence and other violent crimes, reduction in acquisitive crime. Increase in confidence and understanding of healthy life choices.</p>
<p>Sustainable Skills, Sustainable Future</p>	<p>Twelve week programme with ten modules engaging with some of the most "challenging" individuals in the Borough of Ashford who come from disadvantaged backgrounds.</p>	<p>£1,000</p>	<p>PCP Priority: Tackling the Root Causes of Crime and Anti-social Behaviour</p> <p>CSP Priority: Substance Misuse, Anti-social Behaviour, Domestic Abuse, Violent Crime, Acquisitive</p>	<p>Maximise social skills, reducing misuse of substances, reducing reoffending rates, reducing anti social behaviours, increase opportunities for education, work placements.</p>

			Crime	Programme still to be delivered.
Domestic Abuse	Contribution towards domestic abuse service delivery.	£4,000	<p>PCP Priority: Protecting the Public from Serious Harm and Putting Victims and Witnesses First</p> <p>CSP Priority: Domestic Abuse</p>	<p>Reduction in repeat victims, increase in reporting.</p> <p>One Stop Shop continues to be the busiest in Kent. 97 MARAC cases supported by IDVA in 2014.</p> <p>Contribution to IDVA funding with additional funding from Ashford Supporting Families and Ashford Borough Council - contributions for 2014/15. Future funding also obtained.</p>
Domestic Abuse Awareness Session	Delivery of domestic abuse raising awareness sessions to housing providers and other key agencies/local authority officers.	£410	<p>PCP Priority: Protecting the Public from Serious Harm and Putting Victims and Witnesses First</p> <p>CSP Priority: Domestic Abuse</p>	<p>Increased understanding of situations and signs to be aware of, how to sign post/make referrals, increase in reporting, reduction in repeat victims</p> <p>Increase by 29% attending One Stop Shop in 2014 when</p>

				compared against 2013, with over 75% of referrals coming from agencies.
Town Net Radio for Hawkeye	Hire of town net radio for Hawkeye vehicle which is deployed to areas of crime and anti social behaviour (Op Claxon)	£364	<p>PCP Priority: Cutting Crime and Catching Criminals</p> <p>CSP Priority: Violent Crime, Anti Social Behaviour, Acquisitive Crime</p>	<p>Increase in victims being contacted, increase in dispersal of anti social behaviour, reduction in reports of anti social behaviour, shop lifting and violent crime.</p> <p>Efficient access to Op Claxon officers from the local authority monitoring centre to be deployed to potential ASB situations speedily to disperse people and prevent ASB has assisted with the reduction in ASB.</p>
Gating Order Security Provision	Church Yard Passage security. Gate installed through the processes of the "Gating Order" following the location being a repeat location for anti social behaviour in relation to the night time economy	£2,100	<p>PCP Priority: Tackling the Root Causes of Crime and Anti-social Behaviour</p> <p>CSP Priority: Substance Misuse, Anti-social Behaviour, Domestic Abuse, Violent Crime, Acquisitive</p>	<p>Reduction in anti social behaviour.</p> <p>Significant reduction in ASB has been evidenced since the gate has been in situ.</p>

			Crime	
Wireless CCTV cameras	Deployment and maintenance of wireless CCTV cameras that are used in anti social behaviour hot spot locations	£6,000	PCP Priority: Cutting Crime and Catching Criminals	Reduction in crime and anti social behaviour within urban and rural locations. Decrease in ASB in the borough with targeted monitoring of hot spot/high risk ASB areas.

Other Spend (Please include details of any spend which does not link to a project/service listed above)

Sign and Print name of person completing this form

Alison TickleDate: 18/11/14

Appendix E: Glossary

ABC	Ashford Borough Council
AWPAC	Ashford and Weald Partnership Against Crime
ASB	Anti-social behaviour
ASBO	Anti-Social Behaviour Order
ASF	Ashford Supporting Families
CCTV	Close Circuit Television
CSP	Community Safety Partnership
DASH	Domestic Abuse, Harassment and Honour Based Violence
DPPO	Designated Public Places Order
IDVA	Independent domestic violence advisor
IOM	Integrated Offender Management
JFMP	Joint Family Management Programme
KCA	An organisation delivering drug, alcohol and mental health services
KCC	Kent County Council
KDAC	Kent Domestic Abuse Consortium
KFRS	Kent Fire & Rescue Service
KSI	Killed or seriously injured
MAPPA	Multi-Agency Public Protection Arrangements
MARAC	Multi-Agency Risk Assessment Conferences
NHS	National Health Service
PCSO	Police Community Support Officer
RTC	Road Traffic Collisions
YEARS	Youth Engagement Around Road Safety